

JEDY ONLY

USER'S GUIDE



TABLE OF CONTENTS

Copyright.....	3
Electromagnetic Compatibility (EMC)	3
General Instructions	4
Connections	4
Installation.....	5
Filling the tubes	6
Starting messages	7
Programmer P3000	8
Tube Level (Fn09).....	9
Change giving Parameters (Fn01).....	10
"Exact-Change" Equation (Fn01).....	11
General Parameters (Fn00).....	12
USF - Unit Scaling Factor (Fn01).....	14
Prices & Discounts (Fn04).....	14
SETUP through JEDY keyboard.....	16
Programming Coins (Fn08 + Fn03).....	17
Token (Fn35).....	22
GSM Parameters (Fn14).....	23
Safety option (Fn10).....	25
Special Options (Fn15).....	26
Test FageKey (Fn 18).....	27
Coin check (Fn21).....	27
JEDY READER Lite and FageKey parameters (Fn06).....	28
How to set Function 06 in Jedy Reader Lite :.....	29
Credit survey.....	31
Times (Fn07).....	32
Free Credit (Fn22)	33
Free Vends with FageKey type 1 (Fn22).....	35
Free Vends with FageKey 98 (Fn36).....	36
Fictitious Credit (Fn18).....	37
Vend options with FageKey98 (Fn20).....	38
Special discounts with FageKey type 1 (Fn22).....	38
Special discounts with FageKey type 98 (Fn36).....	39
BLACK LIST	40
AUDIT	41
Maintenance	42
How to replace tubes	43
Tubes and coin Extractors	44
Diagnostics	46
Diagnostics on FageKey.....	49
CONFIGURATOR.....	50
SIB	52
Euro Parameters – Function 38.....	53
Warning labels on laser device	54
Specifications.....	57




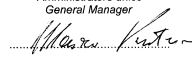
Copyright



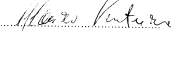
The information contained in this manual is subject to change without prior notice and are not binding for VESIEL SpA.

This document contains information on property, all rights reserved. No part of this document may be copied, transmitted, stored, or translated into another language without prior written authorisation by VESIEL SpA., except where allowed by local laws.

Electromagnetic Compatibility (EMC)

JEDY 5400 and 5600 meet all the standards in CEE 89/336 on electromagnetic compatibility; here below are the declarations of conformity by VESIEL SpA.

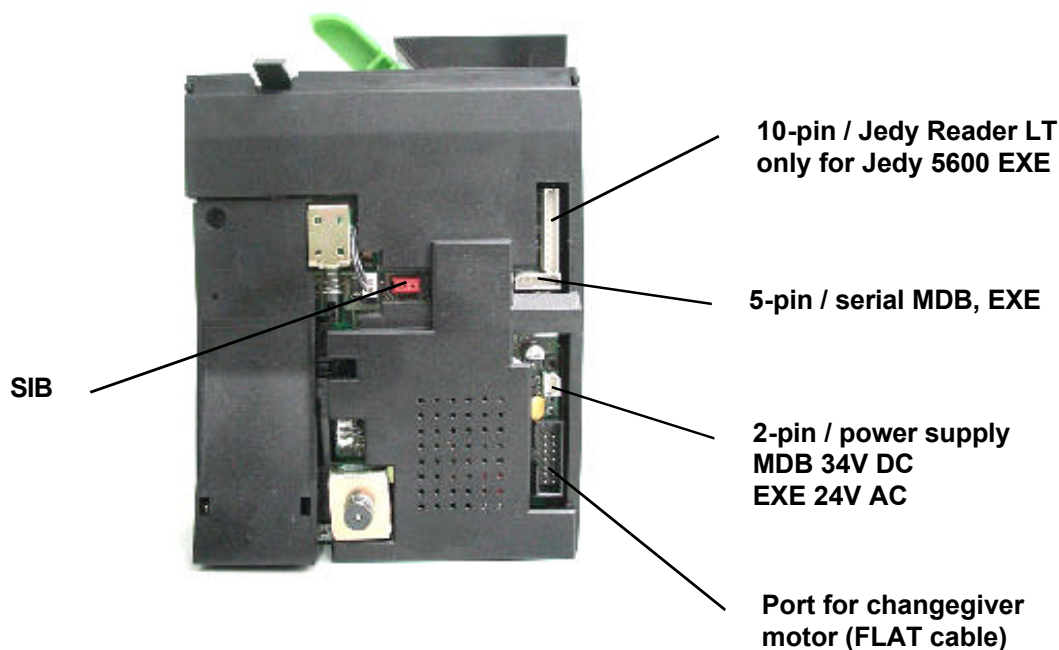
 VESIEL <small>ADVANCED ELECTRONIC SYSTEMS</small>	 FAGE <small>ELECTRONIC PAYMENT SYSTEMS</small>	 EMS <small>ELECTRONIC MANAGEMENT</small>
DICHIARAZIONE DI CONFORMITA' DECLARATION OF CONFORMITY		
<p>VESIEL spa via XX Settembre, 49 22069 - ROVELLASCA (CO)</p>		
<p>dichiara che il sistema elettronico di pagamento modello : declares that the Electronic Payment System model :</p>		
<p>JEDY CG5600 Executive Only 24V AC</p>		
<p>è conforme alla Direttiva 89/336/CEE e modifica 93/68/CEE is conforme to the 89/336/EEC Directive and modification 93/68/EEC</p>		
<p>e che sono state applicate le seguenti norme : with the following Standard :</p>		
<p>EN 55014-1 EN 55014-2 EN 61000-3-2 EN 61000-3-3 EN 61000-4-2 EN 61000-4-3 EN 61000-4-4 EN 61000-4-5 EN 61000-4-6 EN 61000-4-11</p>		
<p>Rovellasca, 14.03.2002</p>		
<p>Dott. Ing. Mauro Ventura Amministratore unico General Manager </p>		
<p><small>VESIEL SPA Sede e stabilimento: 22069 ROVELLASCA (CO) - Via XX Settembre, 49 Tel. +39 02 96.96.141 - Fax +39 02 96.96.14.14 info@vesiel.it - fage@fage.it - www.fage.it R & S: 22070 Invernigo (CO) - Via Prava, 13 Cap. Soc. Euro 600.000 i.s. - C.C.I.A.A. di Como 210.876 - Reg. Imp. Como P.I. - C.F. 01708280134</small></p>		
<p><small>FAGE E EMS SONO DIVISIONI DI VESIEL SPA</small></p>		

 VESIEL <small>ADVANCED ELECTRONIC SYSTEMS</small>	 FAGE <small>ELECTRONIC PAYMENT SYSTEMS</small>	 EMS <small>ELECTRONIC MANAGEMENT</small>
DICHIARAZIONE DI CONFORMITA' DECLARATION OF CONFORMITY		
<p>VESIEL spa via XX Settembre, 49 22069 - ROVELLASCA (CO)</p>		
<p>dichiara che il sistema elettronico di pagamento modello : declares that the Electronic Payment System model :</p>		
<p>JEDY CG5400 ICP-Only 24V DC</p>		
<p>è conforme alla Direttiva 89/336/CEE e modifica 93/68/CEE is conforme to the 89/336/EEC Directive and modification 93/68/EEC</p>		
<p>e che sono state applicate le seguenti norme : with the following Standard :</p>		
<p>EN 61000-4-2 EN 61000-4-3 EN 61000-4-4 EN 61000-4-6</p>		
<p>Rovellasca, 14.03.2002</p>		
<p>Dott. Ing. Mauro Ventura Amministratore unico General Manager </p>		
<p><small>VESIEL SPA Sede e stabilimento: 22069 ROVELLASCA (CO) - Via XX Settembre, 49 Tel. +39 02 96.96.141 - Fax +39 02 96.96.14.14 info@vesiel.it - fage@fage.it - www.fage.it R & S: 22070 Invernigo (CO) - Via Prava, 13 Cap. Soc. Euro 600.000 i.s. - C.C.I.A.A. di Como 210.876 - Reg. Imp. Como P.I. - C.F. 01708280134</small></p>		
<p><small>FAGE E EMS SONO DIVISIONI DI VESIEL SPA</small></p>		

General Instructions

- Read this manual carefully before use.
- This manual is valid for :
 - JEDY 5400 MDB Only
 - JEDY 5600 EXECUTIVE Only
- Before you install the validator, check voltage compatibility with change giver. Follow the nominal values on the labels (tolerance range: $\pm 10\%$)
- All JEDY models are products for internal electrical equipment of Vending Machines.
- Do not use the product in water or near liquids or in places where it may become wet.
- Do not use the product near smoke or inflammable gases.
- Cut power supply before any form of work on electrical and/or mechanical parts.
- Dispose of the device in accordance with environmental laws (DO NOT burn).
- Always read labels.
- Do not tie either the main or accessory output cables.
- Periodically check electrical connections.
- Avoid using extension cables.
- Cut power supply before maintenance and/or cleaning.
- Use a damp cloth to clean the plastic part. Be careful not to scratch the lens of the Laser reader
- Keep the surface of the money chute of the selector clean.

Connections



Installation

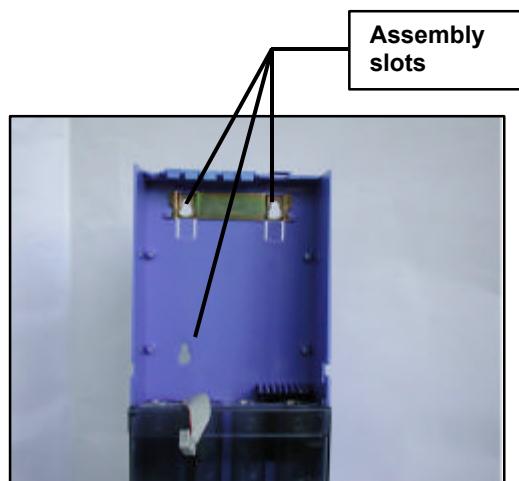
1. Cut power supply.
2. Press the release lever (**Picture 1**) and pull the validator forward (unplug the flat wire connecting it to the internal electronic board).
3. Set assembly slots on the back of the chassis over mounting screws in JEDY (**Picture 2**).
4. Tighten snugly.
5. Plug the flat cable and place the validator in seat (be sure the lever clicks shut).

Check the CHANGE GIVER is correctly in line with the coin channels entry/exit. The following conditions must be observed:

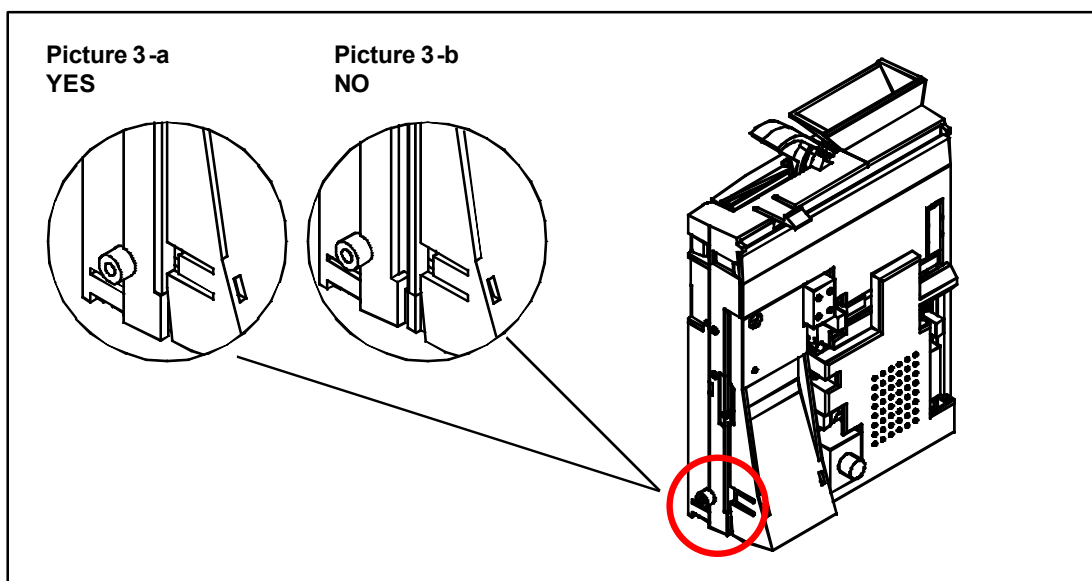
- The entry coin chute must be in line with the machine's. Drop a few coins (power OFF) and check they go in the coin recovery channel.
- The coin recovery lever must be free. Ensure that there is a gap of 2 mm. at least between the return lever of the machine and the validator. Connect the changer to the machine and other plug connections if necessary.
- Press the lever or the coin recovery button on the device and check the lever on JEDY has been pressed right down. The validator gate must open without any difficulty (the coin entry chute opens to about 25 mm)
- Check the lower part is correctly locked (see **Picture 3-a**); a badly locked validator is shown in **Picture 3-b**.



Picture 1



Picture 2



Picture 3

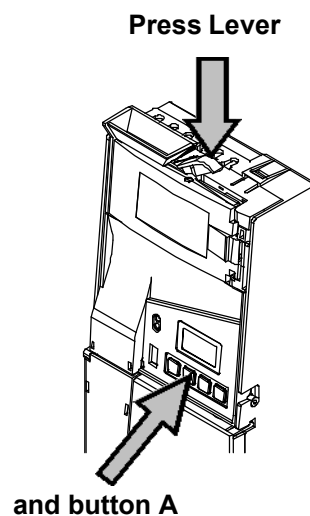
Filling the tubes

JEDY is programmed with a default max. level in tubes (the value is different for each tube set). The max. level for each tube can be customized in **Function 09** (through the P3000) to meet your requirements.

The coin counter can be reset in Fn16 for each tube. Reset counter just in case a tube is emptied and changed.

Instructions for 5400 - MDB only

1. Change giver ON (green LED steady ON, or flashing slowly)
2. Press the **recovery lever**
3. Keep the lever pressed and press button **A**
4. Release both the button and the lever: the **green LED** on the front panel is **flashing fast**
5. Drop one coin at a time; you needn't follow the tube order. When the max. level has been reached in a tube, coins are rejected.
 - If you want to exit "filling" protocol proceed as follows:
 - press LEVER + button **A**
 - wait 30 seconds
 - switch Jedy OFF and ON again.



Instructions for 5600 - Executive only

1. Change giver ON
2. Press the **recovery lever**
3. Keep the lever pressed and press button **A**
4. Release both button and lever: the message "**FILL**" is displayed
5. Drop one coin at a time; you needn't follow the tube order. When the max. level has been reached in a tube, coins are rejected.
 - If you want to exit "filling" protocol proceed as follows:
 - press LEVER + button **A**
 - wait 30 seconds
 - switch Jedy OFF and ON again

WARNING: Jedy 5600 is equipped with a liquid crystal display. With "FILL" protocol, the number of coins in the tube being filled is displayed; if the coins in the tube are ejected, the number displayed is gradually reduced.

Starting messages

When Jedy is switched ON, a few messages on the system operating status are displayed:

mod. 5400 - MDBonly two LEDs on the front panel: GREEN (power supply and serial link); YELLOW (inhibited coins).

Table1 contains all the message combinations.

When the system is switched ON, the two LEDs are ON for about 15 seconds: the system is checking connection to the P3000. If the P3000 is not connected, serial link is established.

LEDs on JEDY MDBonly

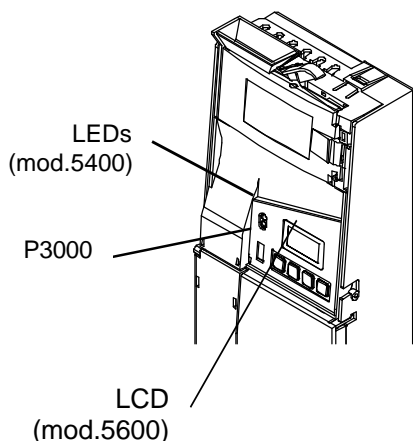


Table 1

JELLOW LED	GREEN LED	Message
ON	ON	On switching ON: connection to P3000 is checked
ON	-	Coins inhibited
OFF	-	Coins enabled
Flashing quickly	-	door open; separator / validator / ejector failure
OFF	OFF	Power failure sw/hw fatal error
-	ON	System ON and MDB serial link enabled
-	Flashing slowly	No serial link to MDB Connection to P3000 enabled
-	Flashing quickly	Filling Protocol

mod. 5600-EXE.only The following messages are displayed:

8,8,8,8,8	LCD check
2,02,00	software release
EUR8	Euro configuration
CAL	system self-calibrating
8,8,8,8,8	waiting link with P3000
0,00	starting credit, system ON
. 0,00	no serial link

System configuration

The product we deliver has already been configured to meet your requirements (selected protocol); load the tubes and the System is ready for use. You can check the main functions, which are listed here below:

Jedy 5400 MDB only:

- general parameters (Function 00)
- Unit Scaling Factor (USF - Function 01)
- set empty/max. level in tubes (Function 09)

Jedy 5600 Executive only:

- general parameters (Function 00)
- USF and changegiving parameters (Function 01)
- prices (Function 04)
- set empty/security/max. levels in tubes (Function 09)

Programmer P3000

The P3000 is the device used to set functions or service the system on spot. It is plugged on the 4-pin connector on the front panel (picture 5). Switch the system OFF before plugging/unplugging the P3000 flat cable.



Picture 5

P3000 Keyboard

- | | | |
|-----|----------|---|
| Key | F | - enter the menu of a Function
- confirm a setting
- scroll parameters |
| Key | E | EXIT
exit a function |
| Key | C | CLEAR
delete a setting (back to previous setting) |
| Key | A | scroll Function list (next) |
| Key | B | scroll Function list (back) |
| Key | 1 | YES or 1
Press key 1 if you want to choose "Y", when a Y/N setting is required. |
| Key | 0 | NO or 0
Press key 0 if you want to choose "N", when a Y/N setting is required. |

P3000 Specifications

- Power supply: 8,4V - 120mAh NiMH rechargeable battery
- Power consumption: about 60 µA standby; about 20 mA with infrared reader activated
- Display: LCD 16 x 2 back-lighted, with menu
- Use without battery: programming functions
- Use with battery: programming functions, infrared data readout (Jedy 5600)
- Battery charger: CHARGE 05 (optional)

Battery.

Batteries must be recharged through the battery charger CHARGE-05. When the message "BATTERY LOW" is displayed, recharge the battery as soon as possible. Replace the battery within 30 seconds, otherwise data will be lost.

Enter Function Menu: connect the P3000 to the System (when OFF), give power and wait till the password is required

LCD on the P3000

ENTER
PASSWORD: -----

** FAGE JEDY *
** Ver. *

Language:
Italian

00 General
Parameters

You have 5 seconds to enter the password, then press F.

If the password is not entered within 5 seconds, Jedy cuts connection to the P3000 and tries a new connection to the change giver.

Software release on Jedy CPU

select either language (button **A** or **B**), then press **F** to confirm.

FUNCTION 00 - press **F** to enter the menu; press **A** (next), **B** (back) to scroll the function list. Functions are explained on the next pages.

READ STEP BY STEP PROGRAMMING IN THE NEXT PAGES.

Tube Level (Fn09)

Select Tube No.	1
--------------------	---

Select a tube : 1=A 2=B 3=C 4=D

Sequence of the four tubes from left to right.

Tube No.	1
No. Coins	0

Number of coins in a tube.

This value can be modified or reset in Function 16. If the counter is reset, the tube must be emptied.

On Jedy 5600, the present level in each tube is displayed (Setup through keyboard – page 16)

Tube No.	1
Min. Coins	10

(ONLY VALID FOR JEDY 5600)

Security Level enabling "exact change" condition.

When the no. of coins reaches security level, exact change condition is activated, (the signal "no change available" is sent to the VMC). As a matter of fact, JEDY keeps on paying out coins till "empty" level is reached.

The "exact-change" table in *Function 01* (next paragraph) gives the combination of tubes at security level enabling the exact-change condition.

Enter a value and press **F** (recommended value = 10)

Tube No.	1
Empty coins	3

Empty level.

This value can be equal to or lower than the security level. If this value is set on "0", change is given till the tube is empty. When a tube is empty, that coin is no longer paid out.

Enter a value and press **F** (recommended value = 3)

Tube No.	1
Max. coins	80

Max. number of coins in a tube.

DO NOT exceed default value.

A tube is full when it contains the max. number of coins. All the coins being dropped after this level has been reached, go to the cash box. As soon as the level has lowered, coins are routed into the tube again.

Enter a value (you can leave default value), then press **F**.

Set this level in the four tubes. When all coins must fall in the cashbox, you needn't set *Function 09*.

Changegiving Parameters (Fn01)

Jedy 5600-EXE contains all the options; 5400-MDB only contains "custom_change"

Function 01 : skip the first option ("USF").

Change without
Vend? (Y/N) N

- N** STANDARD (committed to vend)
The inserted coin is not given back; change will be only given after a vend.
- Y** Change is paid out without prior vend (money changer) if the amount is equal to or lower than the max change value. Press the opening lever to get your money back, change is paid out with the coins in the tubes.
WARNING: the system stops giving your money back if tubes reach the empty level.

Multi Vend ?
(Y/N) N

- N** SINGLE VEND
Change is automatically paid out after a vend. *You can limit the value of max. change in Fn21; if you don't, change is given till tubes are empty.*
- Y** MULTIVEND
Customers can buy more than a product without having to insert money each time. Change is only paid out when customers press the return lever (max. credit is set in Fn00).

Delay Change
after Vend: 0

Use this option in Single-Vend.
Change pay-out is delayed 0 to 30 seconds after a vend. This enables a connected Cashless System (no FAGE) to load a key. No coins are paid out. Standard value = 0

Exact Change
Equation 0

Go to next paragraph.

Maximum Change
50000

Max. change that can be paid out after a multivend. For higher values, the difference is displayed for 3 minutes, then it is cleared and stored in "overpay". **Max. value 65535** (€655.35)
Max. change in single vend can be limited in Fn21.

Custom Change
Amount: 0

You can customize the change value and the number of coins to be paid out from each tube.
If you leave "0" (zero), the number of coins to be paid out is calculated by JEDY. **Standard value = 0**

Custom Change
Tube 1:Coins 0

You can set the number of coins to be paid out from each tube; if the change value is higher than the default value, JEDY pays out the exceeding change automatically.

Function 21 : set this function to limit max.change in Single Vend

Max. change in
single vend? N

- N** STANDARD. Change is paid out with the coins in the tubes.
- Y** Change is limited to max value set in Fn00.

"Exact-Change" Equation (Fn01)

(Only for JEDY 5600)

This function fixes the combination of tubes at Security Level that can enable the "exact-change" condition (the tubes are empty - no change is given)

Enter one of the number-equations (00 to 14) in **Table 2**.

Exact-change condition is enabled when the tubes connected to the equation have reached the SECURITY Level. *Security Level is set in Fn09 for each tube.*

A signal warns the customer that no more change is available. The vend must be paid for with an exact number of coins.

Nevertheless, in the "Exact-Change" condition, change is still paid out till the EMPTY level is reached for each tube. *Empty level is set in Fn09 for each tube.*

Table 2 - Exact Change equation

No.	Exact-change condition when the following tubes are at Security Level:
00	L or M or HL or LL
01	L or M
02	HL or HH
03	L or HH
04	L
05	M
06	HL
07	L and HH
08	HL and HH
09	L and M
10	L and M and HL and HH
11	L and HL or L and HH
12	L or HL and HH
13	HH
14	L and M and HL

L	Tube with lowest value coins
M	Tube with medium-low value coins
HL	Tube with medium-high value coins
HH	Tube with the highest value coins

L - M - HL - HH refer to the tubes in increasing order of coin values they contain; if coins with equal value are contained in different tubes, the lowest value is the one belonging to the tube nearest to A position.

Examples :

	EURO			
	TUBES			
	A	B	C	D
Coins	0,1	0,05	0,2	0,5
Classification :	M	L	HL	HH

	SWITZERLAND			
	TUBES			
	A	B	C	D
Coins	0,1	0,2	0,5	1,
Classification :	L	M	HL	HH

Table containing EURO coins: if you select combination No. "10", the exact-change signal will be given when all four tubes have reached SECURITY Level; in combination No. "04", signal will be given as soon as the tube containing € 0.05 has reached SECURITY Level.

General Parameters (Fn00)

Function 00 contains all the CHANGE GIVER main parameters. All parameters must be set, otherwise the unit will not function correctly.

Databox type :
N=P3000 Y=PC N

Select Databox for data readout.

N Standard FAGE P3000. You can also use PSION with P3000/Slave mode; connection to IrDA / RS232.

Y Standard Protocol EVA-DTS: PSION in EVADTS/Master mode

External Irda
Interface? N

N Standard.

Y Select "Y" when either of the following IrDA modules (optional) is connected to the P3000:

Single IRDA : **AL40.426**

JedyReader Lite/IrDA: **AJ000008150**

Operations through IrDA interface :

Jedy-5400 – PC configuration

Jedy-5600 – PC configuration, Audit readout

(External IrDA max. speed = 38400 Baud)

EXECUTIVE
Protocol ? Y

Only for mod. 5600

N Executive protocol inhibited

Y Standard: Executive Protocol enabled

Price Holding
mode ? N

N Standard Executive (prices set on VMC)

Y Executive Price-Holding. Set prices in Fn04, then associate them to selections in Fn17 (up to 99 prices are possible – Fn19). The corresponding Price Holding mode must be set on VMC.

Send Price Value
to VMC ? N

Only with Price Holding mode

N Standard

Y The price is displayed on the VMC when a selection button has been pressed but no coins have been introduced yet.

MDB-ICP
Protocol ? N

N MDB-ICP Protocol inhibited

Y MDB-ICP Protocol enabled

mod.5600 – plug EXE-MDB Interface on 5-pin serial output.

BDV-Master
Protocol ? N

Enter "N"

CHARGER
mode ? N

Only for Jedy 5600

N Standard

Y "Charger" mode. Coins and keys are accepted (no serial line is needed).

Machine number
1234567

Identification number: digit a number (1 to 9999999). The code appears both in printouts and in the AUDIT file.

Machine type
(1-99) 1

Enter a number for machine type (1 to 99). The number is not printed in the Audit list but it appears in the same when transmitted to the PC.

Currency
description 1

Enter the number corresponding to the currency in use. **When the system has been configured in EURO or else it is connected to FageKey Reader with EURO keys, this option is set on 978. Reset the memory to change currency number (if necessary).**

Coins inhibited
without key ? N

Only for Jedy 5600

With "Jedy Reader LT"

N Coins are always accepted. You don't have to insert the key.
Y Coins are only accepted when key has been inserted.

Decimal Point
Position 0

Decimal point position.
0 = amount rounded off (no cents)
2 = amount displayed with cents (EURO).

Maximum Card&Key
Credit: 65000

Only for mod. 5600 -

Max. amount that can be loaded on key.
Max. value: 65535 (€655.35)

Maximum Cash
Credit: 10000

Only for mod. 5600 -

Max credit accepted with payment coins and/or bills.
Max value: 65535 (€655.35)

New Password:
0

Press **F** to confirm password, or else enter the new password and confirm with **F**.
Max. Value: 65535

Date
dd/mm/yy 000000

Current Date : day, month, year

Time
Hrs/min 1230

Current time: hours and minutes.

USF - Unit Scaling Factor (Fn01)

For EXECUTIVE - ICP - BDV001 protocols

Unit Scaling
Factor 001

Unit factor of base scale: this value must be the same as the smallest credit unit accepted on **FageKey**.

EURO USF = 001

(Max value with Executive protocol = 255)

Prices & Discounts (Fn04)

Only for JEDY 5600 (Executive)

Executive Standard Protocol – 10 prices

Set prices if you want to get sales data (audit) for each selection price; a sale is stored when its price was set in Fn04; if a price is not included in the price list in Fn04, the vend price is added to the total. Price is checked by the machine.

In order to give discounts, associate a discount value to a selection (the discount will be given to all vends with the same price). Discounts will be only given to **FageKeys**. For cash payments you can enable two different times for discounts (Fn07).

Discounts vary according to the key in use:

- Key type 1: a discount for each price
- Key 98: four different discounts for each price; discount options are set in Function 36 (*discount times, enable discounts, check discounts, quantity of discounts*). Fn36 is only available when Key98 has been enabled in Fn06.

We recommend setting Price Holding Mode to manage discounts best (up to 99 vend prices – several discounts for each price).

Price Number 1

Enter the price line to be set (1 to 10) and press F to confirm.

1^ Price
value 65000

Enter price 1 and confirm with F

1^ Pr./Disc. 1
value 0

Enter discount 1 for price 1, then press F to confirm. *Keys type 1 are only given **discount 1**.*

1^ Pr./Disc. 2

1^ Pr./Disc. 3

Set the following discounts

1^ Pr./Disc. 4
value 0

Executive Price Holding - 10 prices

Sale prices are checked by JEDY. If you want to program the system following the base table (10 prices), proceed as in **table 4**.

Table 4

Function 00	" EXECUTIVE Protocol? "	Y	protocol EXE enabled
	" Price Holding mode ? "	Y	Price Holding mode enabled
	" Send price value to VMC ? "	Y/N	free choice (read paragraph)
Function 01	Unit Scaling Factor	001	enter "1" (up to 64 selections)
Function 04	" 1^ Price value: - - - - - "		enter up to 10 prices (a price for each selection)
	" 1^ Pr./Disc. 1 value: - - - - - "		up to 4 discounts for each price
Function 17	" Selection number (1 – 64) 1 "		enter the selection no. (up to 64 selection buttons are available)
	" 1^ Selection Price line No. - - "		enter the price no. (1 to 10) corresponding to the selection

Send price value to VMC – price is transmitted to the VMC when you press a button (price has not been charged yet). The price of the vend is not only written on labels on the Vending machine but it is also displayed (you can check prices before payment).

Price Holding - 99 prices (different mode)

Up to 99 prices (extended memory). This option is useful for all those multi-product Vending systems offering a high number of selections. All the 99 prices are set in Fn04 (price number = selection number) and you don't have to enter Fn17. In this case one discount is given for each price. Set as from **table 5**:

table 5

Fn00 / Fn01	= table 4		
Function 19	" 99 selections ? "	Y	protocol EXE enabled
	"Reset Prices and Discounts?"	Y	reset present table (10 prices)
	" Confirm Reset ? "	Y	confirm reset
Function 04	" 1^ Price value: - - - - - "		enter 99 vend prices
	" 1^ Pr./Disc. 1 value: "		enter discount for each price

Audit memory is only extended to 99 prices in the DDCMP file (the first 10 prices only appear in the printout through ST3000 Interface).

SETUP through JEDY keyboard

Only for JEDY 5600 (Executive)

SETUP Menu: press the opening lever, then press button **B** (without releasing the lever).
When the message "SEtUP" is displayed, release the lever.

Press this Lever

Available functions:

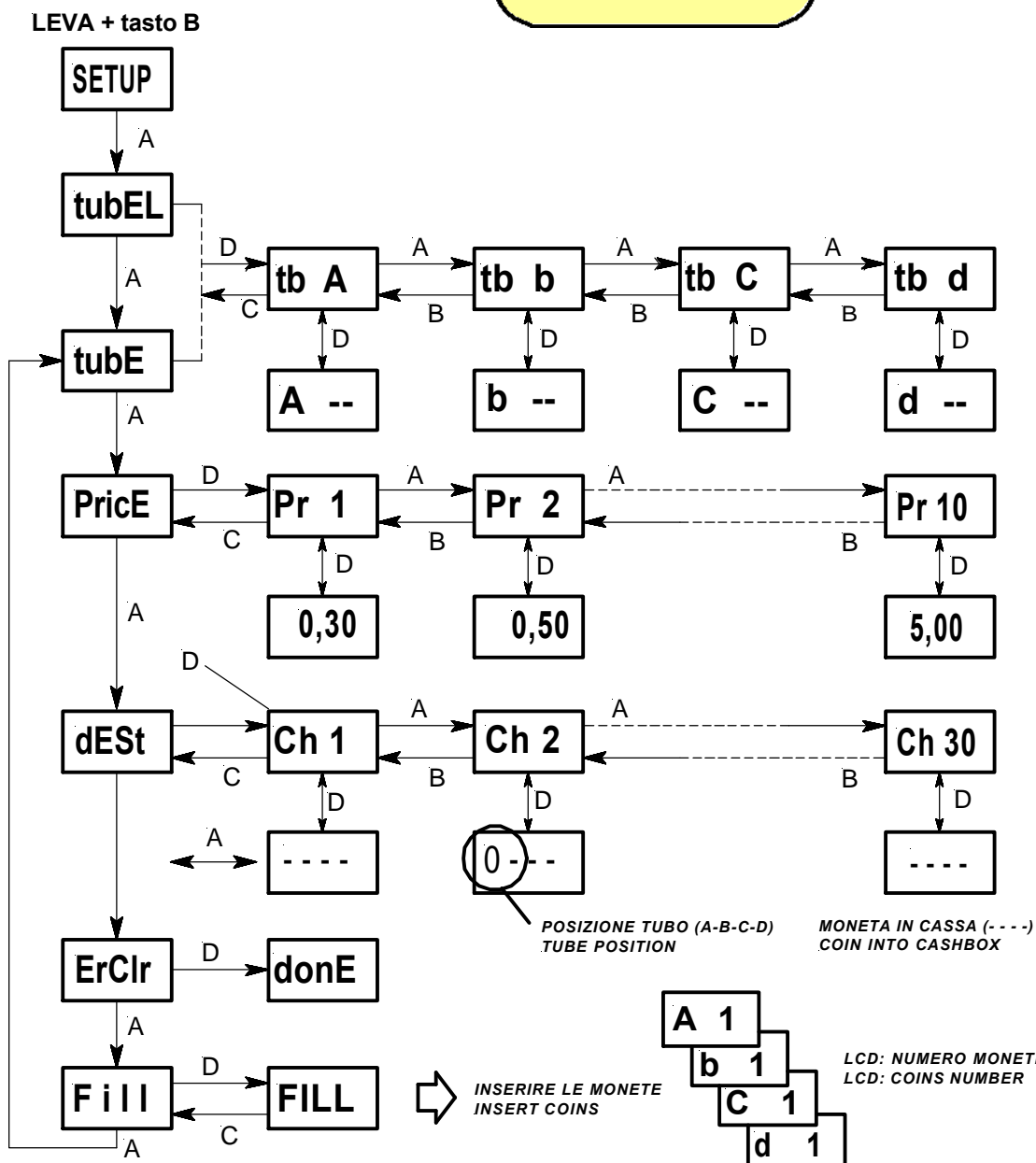
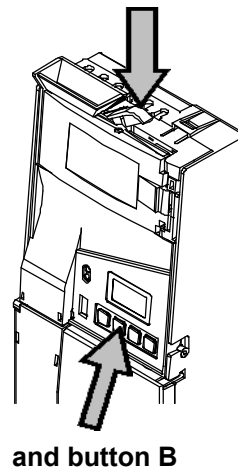
- read coins in tubes
- set max. level in tubes
- set prices
- coins in tube ...
- reset Errors
- fill Tubes

tubEL
tubE
Price
dEst
ErClr
Fill

Key functions :

- A** ▶ next menu / increase value
- B** ▶ previous menu / decrease value
- C** ▶ back to higher menu
- D** ▶ enter menu / confirm / execute

Direct access to filling mode [FILL] through LEVER + key **A**. In FILL mode tubes can also be emptied. The quantity of coins in a selected tube is displayed.



Programming Coins (Fn08 + Fn03)

Up to **30 coin channels** can be set in **Function 08** through the P3000: select coin channel and parameters, then insert coins. In **Function 03** you can set the coin path (cashbox or tubes), discrimination parameters (accept yes/no with empty tubes, inhibit) and tolerance (Delta)

Programming through PC:

The new "VeCoP" software is now available to program EURO coins (compatibility: Windows 98/2000). The serial cable CB.01491 is also necessary.

Don't set coins in channels that have already been set; use free channels.

Function 08 : programming coins through the P3000

Programming
Coins 1

Enter the number of the channel you want to program and press **F**.
If the message "channel not available" is displayed, try with another channel (highly recommended).

Progr. Coin 1
N.Passages 10

Number of coins to be dropped.
Enter a number (4 to 99), then press **F**
Recommended Number = 10

Progr. Coin 1
Increase Delta 2

Enter the "Delta" increase (0 to 15), then press **F**.
☺ **Recommended Value = 2**

The DELTA value may be modified later in **Fn03**.

Coin No. 1
Milling Coin: N

Milling check option :
Set " N "

Progr.Coin 1
Black Coin? N

Set " N "

For further details on the creation of a black coin channel, see the dedicated paragraph.

Programming 1
in progress 0/10

Drop coins **slowly (one coin at a time)**. Coins fall into the recovery channel. The menu of the P3000 goes back to Function 08 "Programming Coins" after the last coin has been dropped.
Function 08.

LCD

1- 10


>

for Jedy 5600: the number of coins that have been dropped and the overall number of coins that must be dropped are displayed on JEDY LCD.

When all the coins have been set, set parameters in Function 03.

FUNCTION 03 – Coin parametres

All coin parameters in the 30 channels can be read or modified in **Function 03**.
Enter a channel and press **F** to scroll down parameters. Press **E** to exit the function.

 Set this function with the utmost care; incorrect setting might prejudice JEDY's discrimination level.

Select
Coin No. 1

Function 03

Enter the channel no., then press **F**.

Coin No. 1
EURO ? Y

N Tubes contain other coins than EURO.

Y Tubes contain EURO coins.

EURO is accepted when currency description in Fn00 = 978.

1^ Coin Euro
value: 0,00

Coin value (**max 65500**)

Enter the new value (when necessary), then press **F** to confirm.
the value must be equal to or a multiple of the unit scaling factor (USF) set in Function 01.

List Coin
Options 1? Y

N The first coin parameter is displayed (diameter)

Y Scroll the whole menu list

Coin No. 1
Inhibit? (Y/N)

N The coin is accepted

Y The coin is rejected

If a coin has been set in several channels, channels can be inhibited / enabled separately; when a coin is dropped, all channels are checked.

Coin No. 1
FAGE Coin Set N

N Free or re-programmable channel.

Y Only-read parameters.

As a rule, channels set with "Y" are default channels. Don't edit parameters in these channels because they might be useful in the case of servicing. These channels can be inhibited, though.

Coin No. 1
Black Coin? N

N Standard: coins are accepted.

Y BLACK COIN channel (see paragraph)

Default setting = N

Coin No. 1
Tube 1? (Y/N) N

Coin destination:

N The coin does not fall in tube 1

Y The coin falls in tube 1 (tube A)

Coin No. 1
Tube 2? (Y/N) N

Coin No. 1
Tube 3? (Y/N) N

Coin No. 1
Tube 4? (Y/N) N

- > If the four tubes are set with **N**, coins go to the CASHBOX.
- > When a tube is full, coins go to the cashbox.
- > A coin may be sent into more than a tube (check compatibility in diameter)

Coin No. 1
Exact Change? N

Only for 5600-EXE

N Coins are only accepted WITHOUT empty change condition.
Y Coins are ALWAYS accepted (with empty tubes too).

- set Y for those coins falling into the tubes;
- we recommend setting Y for those coins that can be used for those sales where no change is paid out (low value sales, for instance).

Coin No. 1
With Card? N

Only for 5600-EXE

N Coins are also accepted with the key inserted.
Y Coins are ONLY accepted WITH the key inserted in the reader¹ (exact-change condition inhibited). With max.credit on key, coins are not accepted.

Coin No. 1
Token? (Y/N) N

N STANDARD.
Y A coin is handled as a token. Change payout can be inhibited for vends with tokens (further parameters on change/token handling in Fn35).

- Here starts the list of coin parameters.

DELTA values are calculated by the system, following the coin parameters measured when programming. The VECOP software for EURO coins automatically sets delta values.

Coin No. 1
Diameter: ---

Diameter. The value is calculated through the Laser sensor.
The value refers to the coin physical diameter elaborated by the software.
Do not modify.

Coin No. 1
D-Diameter: ---

Delta Diameter. Tolerance on "diameter".

Since the diameter value is highly sensitive (1pt = 50µm), be careful when you enter the Delta value:

- 1-2 fine/medium acceptance: when slugs with same diameter as legal coins are known to be circulating in a site.
- 3 good acceptance (**FAGE standard setting**): when coins are physically standard and no slugs with same alloy and diameter as legal coins are circulating.
- 4 > broad acceptance: either no slugs are circulating or diameter is not standard for all coins.

WARNING: some coins are not perfectly round-shaped. If that is the case, do not decrease the automatic delta value and proceed with a more accurate coin discrimination test before assembly.

Coin No. 1
Thick.Ind.: ---

Thickness inductive. Inductive value on coin thickness.
Do not modify.

D-Thick.Ind.:---

Delta thickness. Average value 5-6 pts. Poor discrimination may result from low values (3-4 pts).

Coin No. 1
AlloyAmpl.-: ---

Alloy Amplitude Negative. Alloy value.
Do not modify.

D-AlloyAmpl.-: --

Delta Alloy Amplitude negative.

¹ "Jedy Reader" is an optional device (for Jedy 5600/Executive only).

Coin No. 1
AlloyAmpl.+ : ---

D-AlloyAmpl+ : --

Alloy Amplitude Positive. Alloy value.
Do not modify.

Delta Alloy Amplitude positive.

Coin No. 1
AlloyPhase- : ---

D-AlloyPhase- : --

Alloy Phase Negative. Alloy value.
Do not modify.

Delta Alloy Phase Negative.

Coin No. 1
AlloyPhase+ : ---

D-AlloyPhase+ : --

Alloy Phase Positive. Alloy value.
Do not modify.

Delta Alloy Phase Positive.

Coin No. 1
Enab.AlloyBord:N

Enable Alloy Border. Alloy value.
This value is useful for bimetallic coins.
N Standard: the value is not calculated.
Y The value is calculated

Coin No. 1
AlloyBord.1 : ---

D-All.Bord.1 : --

Alloy Border 1. First value coin edge.
Do not modify.

Delta Alloy Border 1.

Coin No. 1
AlloyBord.2 : ---

D-All.Bord.2 : --

Alloy Border 2. Second value coin edge.
Do not modify.

Delta Alloy Border 2. (broad delta value)

Coin No. 1
Parameter F : ---

D-Parameter F : --

Parameter F
Do not modify.

Delta parameter F. *Do not modify.*

Coin No. 1
Enable Milling:N

Standard: set " N "

Coin No. 1
Cnt.Mill.min. : --

Coin No. 1
Cnt.Mill.max : ---

Milling MIN value:

Milling MAX value:

Coins are accepted when this value is **equal to** or **higher than** the memorized value.

Coins are accepted when this value is **equal to** or **lower than** the memorized value.

Do not modify

Coin No.	1
Amp.Mill.min:---	1
Amp.Mill.max:---	

Amplitude MIN value

Coins are accepted when this value is **equal to** or **higher than** the memorized value.

Amplitude MAX value:

Coins are accepted when this value is **equal to** or **lower than** the memorized value.**Do not modify**

Coin No.	1
EnableParam.S: N	

"Smoothness" check.

Standard: " N "**Do not modify.**

Coin No.	1
Parameter S: ---	
D-Parameter S:--	

Smoothness Value. Default value = 99.

Default nominal value.

Do not modify.

Delta Smoothness. Default = 99

Coin No.	1
EnableParam.D: N	

N The value is inhibited.**Y** The value is enabled.

Coin No.	1
Param.D min: ---	
Param.D max: ---	

Parameter D min.: the coin is rejected with lower values.

Parameter D max: the coin is rejected with higher values.

Coin No.	1
EnableParam.A: N	

N The value is inhibited**Y** The value is enabled**Do not modify**

Coin No.	1
Param.A min: 0	
Param.A max: 235	

Min. value: the coin is rejected with lower values.

Max. value: the coin is rejected with higher values.

DELTA of COIN PARAMETERS

"DELTA" values are the tolerances on coin discrimination parameters. When a number of coins have been dropped, JEDY calculates the average DELTA value on each parameter. This value can be later modified to correct the discrimination level for a coin.

The Delta value is to be read as follows: if the alloy value is 150 with a delta of 5, the alloy is recognized with a value between 145 and 155.

In the case of a poor acceptance, set the rejected coins in a free channel and compare their nominal values with FAGE default values: if nominal values are the same, poor discrimination is the result of a strict delta (increase the delta value). In that case, leave both default and newly programmed channels enabled (coin parameters are compared in all channels).

In the case of an excessive difference on diameter, call Vesiel customer service.

Token (Fn35)

Only for JEDY 5600 - Executive

You can either inhibit change payout for payment with tokens, or accept both coins and tokens.
If you want to enable this option, a token channel must be programmed at least; a "token" channel is recognized through its option in Fn03.
This option avoids misuse as changegiver (return change for token).

How to set a token channel:

Coin N.--
Token ? (Y/N) Y

Function 03

After the token has been programmed in one of the 30 channels, select the channel no. in Fn03 and set **Y** in the option "Token" (press **F** to confirm).
Enter Fn35 to set the options about change payout.

Function 35 : set token handling mode:

No Change
with token? N

- N** Change is not paid out at once (see next option – Block change)
- Y** Residual credit is cleared, no change is paid out. Credit is stored in Audit as "overpay".
The next option "Block_change" is inhibited.

Block change
with token ? N

- N** Change is always given (with token, too).
- Y** Change is not given when the vend has been paid for with tokens; Residual credit is managed through the option before (credit cleared or displayed for 3 minutes).

Inhibit Mix
coins/Tokens? N

- N** Both coins and tokens can be inserted.
- Y** Either coins or tokens can be inserted; if a coin is dropped first, no tokens are accepted (and viceversa). Starting condition is restored when credit = 0.

GSM Parameters (Fn14)

GSM Modem
present ? N

- N Option inhibited.
Y Remote Control enabled. Enter Y to connect JEDY to a RCS Control Unit (either Modem Interface or RCU-Net).

Vnet
Connection ? N

- N The system is not connected to other systems (stand alone).
Y The system is connected to other payment systems.

Display
RF signal ? N

- N Option inhibited.
Y RF range is displayed after switching the system OFF and ON again (when the system is switched ON the next day, the range is no longer displayed – enter Y to display it again).
Such a check can be also enabled through a special **ServiceFageKey** – when **JedyReaderLT** is present (the serviceKey can be only programmed through a GiottoProgrammer).

A message is displayed corresponding to a specific range – see table:

standard value ☐ 14
if “Err” is displayed, no Modem has been found.

LCD	RF range
rF	< 12
rF	09 ÷ 12
rF	13 ÷ 16
rF	17 ÷ 98
Err	99

Receive errors
from VMC ? N

- N Option inhibited.
Y Vendor transmits errors to JEDY. Check the Vendor has been configured with a compatible Executive protocol, if not leave “N”. (For any information on protocol editing call Vesiel SpA)

Alarm delay
seconds 1

Interval before an alarm SMS is transmitted. On switching Jedy ON, the system waits twice this time before sending an SMS on the status of the Vendor.

RCS Telephone:
 0

Remote Control System phone number (on the SIM-card):
enter either phone number + area code (ex.: 335124567) or phone number + Country code + area code (ex.: 00393351234567).

Service Center:
 0

Customer Service Centre: **enter phone number + Country code :**
(ex. 00393351234567)



Cashbox full
value 0

“Cashbox full” warning signal: enter a value (no cents). When this value has been reached, JEDY sends a warning signal; the system repeats this check option after Audit readout.

Ex.: enter 25 to receive a message when the cashbox contains € 25.00.
Max. value: €999999

Max. selections
number 0

Warning signal - Vendor empty. Enter the number of Vends starting the “Vendor empty” condition: when this number has been reached, JEDY sends a warning message. This check is repeated after Audit readout.
Max. vends: 65535.

Min. selections
number 0

Warning signal – Vendor almost empty. Enter the number of Vends still left to reach the “Vendor empty” condition: JEDY sends a pre-alarm message. This check is repeated after Audit readout.
Max.vends: 255.

1^ Selection
Max. 0

Warning signal – Selection no.1 empty. Enter the number of Vends starting “Selection no.1 empty” condition: when this number has been reached, JEDY sends a warning message. This check is repeated after Audit readout.
Max. vends 65535.

1^ Selection
Min. 0

Warning signal – Selection no.1 almost empty. Enter the number of Vends still left to reach “Selection no.1 empty” condition: JEDY sends a pre-alarm message. This check is repeated after Audit readout.
Max.vends: 255.

Alarm counters are available for 10 selections.

Standard Executive protocol – go to the price list in Fn04: the selection no. corresponds to the price no.

Price-Holding protocol – the selection no. is transmitted to the Vendor when a button is pressed: refer to the selection-product no. on the Vendor.

For further information on RCS assembly, call VESIEL SpA – Tel. (0039-(0)29696141 – e.mail info@fage.it – we shall send you a brochure and the RCS guide.

Safety option (Fn10)

This function has been introduced to make PINs on keys safer: PINs are not even known to the servicing personnel (they can only be set through a ServiceKey)

After this function has been enabled, introduce the « access key »: PINs are automatically updated to the secret PINs on the key.

PINs on all the user-keys circulating must be now updated either through «Giotto-Converter» (it can be installed on spot), or through Giotto Programmer (after inserting an «access key»).

After the safety option has been enabled, the system PIN can be modified either through an access key or the P3000 (in this case the old PIN is needed). The PIN can no longer be read/modified through PC-Configurator.

This option can be enabled either to modify the PIN of an already operating system, or to protect new systems with safer PINs.

Security ?
N

N Standard. PINs are checked as usual (access key is not accepted).

Y The system accepts an access key (PINs are updated). Warning: PINs on user keys are not automatically updated (they must be updated either on spot through "Giotto-Converter" or through "Giotto-Programmer" at the Vendor handler's seat).

Once Fn10 has been enabled, it can no longer be inhibited. If Fn10 must be inhibited, reset the whole system (PINs are also reset).

Special Options (Fn15)

Only for JEDY 5600 - Executive

Cash to loading Key blocked ? N	<p>N Both coins and tokens are accepted.</p> <p>Y Either coins or tokens are accepted; if a coin is dropped first, no tokens are accepted (and viceversa). Starting condition is restored when credit = 0.</p>
Exact-Change signal Off ? N	<p>N Standard: "exact change" message is transmitted to the VMC.</p> <p>Y No "exact change" message is transmitted to the VMC (no message is displayed about tubes being empty – no change is given)</p>
Timeout Credit Cash Off ? N	<p>Time before residual credit is reset (see Fn13)</p> <p>N Residual credit is displayed for three minutes, then it is reset and stored in "overpay".</p> <p>Y Residual credit is always displayed.</p>
Selection no. start from 0 ? N	<p>N Standard</p> <p>Y Only valid for 100-selection-systems. In this case, selection 0 corresponds to price 1.</p>
Additional Price Cash payment ? N	<p>N Standard: prices are the same both cash or with key (unless discounts)</p> <p>Y Higher price for cash payment.</p>
<div data-bbox="188 1001 268 1093"></div> <div data-bbox="268 1048 542 1131">Additional value 0</div>	enter the price increase for cash (the same for all prices).
Inhibit Manual Ejection ? N	<p>N Standard, manual ejection through enabled keyboard.</p> <p>Y Keyboard inhibited.</p>
Inhibit Set-Up Menu ? N	<p>N Standard, set-up functions through keyboard enabled (LEVER+B).</p> <p>Y Set-up through keyboard is not available.</p>
Inhibit Display Tube Level ? N	<p>N Standard: the amount of coins in the tube is displayed while ejecting coins manually.</p> <p>Y The amount of coins in the tubes is not displayed.</p>

Test FageKey (Fn 18)

Only for JEDY 5600 - Executive

Enter Fn 18 and scroll down the menu to the following options

Location Code
Untesting ?

- N** Standard location code check: keys are only accepted if their location code is the same as the one set in Fn06.
- Y** Skip location code check: keys are also accepted with a different location code (PIN and Operator code must correspond, though).
This option may be useful in those locations where keys having different location codes are inserted in the same Vendors (for example, in a canteen).

Test Service Key
Unlimited? **N**

Test ServiceKey.

- N** Credit on *FageServiceKey* 65528 is reduced whenever a TEST vend is made. This option is useful when a key is lost (the key is inhibited when max. credit is reached).
ServiceKey can be only loaded through *Giotto Programmer* (no cash).
- Y** Credit on *FageServiceKey* 65528 is never reduced (no limit to vends with key).

TEST vends are stored separately, under the label "TEST vends".

Coin check (Fn21)

Test function

Bill Validator &
Acceptor Test ? **N**

This option allows you to test a Coin Validator (Jedy 5600 cannot be connected to a Bill Reader)

- N** Option inhibited.
- Y** Option enabled: you can test coin discrimination. Insert *FageServiceKey* 65528, then drop coins. If coins are accepted, their value is displayed for 3 seconds.

JEDY READER Lite and FageKey parameters (Fn06)

Only JEDY 5600 - Executive

Instructions about Fn06, Fn22 and Fn36 (key features) only refer to FAGE "Jedy Reader Lite" plugged on inner connector J6 /10 poles.

Main Features

JEDY READER LITE enables payments through contactless "FageKey"; connector (J6) lies on the back wall (see page 4)

Jedy Reader LITE	code AJ000008010	compatible with <i>FageKey</i>
Jedy Reader LITE/IrDA	code AJ000008150	compatible with <i>FageKey</i> , IrDA/2400 Baud serial optical interface

Keys can be loaded with coins/bills (up to the max.credit set in Fn00). Max value: 65535 units (€655.35). Keys contain a PIN + 2 safety codes (operator code + location code) that are checked when inserting the key into the *Reader*.

The three safety codes on the key must be set in Function 06, otherwise a key is not recognized.

LEDs on *Jedy Reader* (front panel):

Led OFF	Led GREEN	Led RED	Led AMBER
No key	key inserted, credit OK, ready for use	selecting..., do not pull out the key	error, invalid key

Two different FageKeys :

FageKey type 1	FageKey 98
Single credit memory, free-credit is either added or deducted from credit on the key. Date: either day or month.	Two separate credit memories; one for cash credit (coins and bills), the other for free credit. Date on the key is complete (dd/mm/yy) and enables a more complete use of periodical features.

Keys can be programmed either through **GiottoProgrammer** or through *P4000-rev.6.2* (the latter for limited functions - no longer available); Key type is selected according to the currency type of the FAGE system (valid for all JEDYs, GIODYs, GIOTTOs):

FAGE EURO systems	FAGE no EURO systems
FageKey "Euro 1", "Euro 98"	FageKey "type 1", "type 98"

- **Warning !** When a key "type 1" is inserted in a EURO system, credit on the key is converted to Euro following the change rate in Fn38.

How to set Function 06 in Jedy Reader Lite :

Cashless System?	N
------------------	---

This option must be set on "Y"

Y JedyReader installed.

KEY '98 Management?	N
------------------------	---

Select key format

N FageKey with single credit memory.

Y FageKey98 (type2) with two separate credit memories (Cash and Free Credit).

Free Credit can be either added or replaced without modifying Cash Credit on the key.

Once the format has been established, ALL keys and payment systems in a location must have the same format.

Operator Code	0
---------------	---

The same code must be set both on the system and on keys.
Enter a number between 0 and 65500.

Location Code	0
---------------	---

The same code must be set both on the system and on keys.
Enter a number between 0 and 32000 (no higher than 32000).

PIN Code 1	-----
------------	-------

PIN 1. (Personal Identification Number).

If you want to edit PIN 1, enter the present PIN (***** is displayed on the P3000) and press **F** to check whether it is correct; then enter the new PIN1 and press **F** to confirm.

PIN 2	-----
-------	-------

PIN2. Follow the same instructions as for PIN1. PIN 1 + PIN 2 form the 10-digit PASSWORD on the contactless key (max. safety). If you prefer a 5-digit code instead, you can leave the PIN 2 on 00000; keys will be only recognized through PIN1.

If you want to edit PIN 2, proceed as for PIN 1.

For safer PINs read the manual on "Management-Safety" (also read the paragraph "Safety Option – Fn10" on page 28).

Single Vend with Key ?	N
---------------------------	---

N Multivend. When the key is inserted, more selections are possible.
Credit is reduced after each vend.

Y Single vend. The key must be pulled out after each selection (wait till the green LED is ON). *If the key is not pulled out, the vend is inhibited.*

Key maximum Credit control?	N
--------------------------------	---

N Check on max.credit inhibited. The key is accepted up to a value of 65535.

Y Check on max.credit enabled. The key is rejected (coins inhibited) if its credit exceeds by 50% the max. value set in *Function 00*. Coins are always accepted but credit is not loaded on keys (bill reader is inhibited)

Last digit
control ? N

EURO systems: leave on "N"

N The key is accepted for any value of the least significant digit of the credit (0 to 9).

Y The key is rejected if the least significant digit is not 0 or 5.

Warning : when the option is enabled, prices and discounts must be multiple of 5, otherwise keys are rejected after the first vend.

Credit survey ?
N

Go to next page.

Credit survey

This option (newly introduced in Jedy-Giody-Giotto) reads total credit on the keys circulating in a location – credit is read on each key that has been inserted while the option is enabled.

For all payment systems: set "Y" for the option "credit survey", then enter a code (**the code must be the same for all the systems in a location**).

When the option has been enabled, each key is updated with the new credit survey code when it is first introduced in the reader: credit on the key is memorized and added to the total in the Audit (under a specific label).

As a matter of fact, the total amount of credit stored depends on the number of keys that have been introduced in the reader with the "credit survey" option enabled – the amount may be only a partial value.

When the total credit on all keys has been surveyed, you can either edit the code and repeat the operation, or disable the option (set "N").

Credit survey ?	N
-----------------	---

N Function inhibited
Y Function enabled: credit survey is started on all keys.

Survey code:	123
--------------	-----

enter the survey code (1 to 255): all the keys inserted either with lower or zero code are updated to this code; credit on each key is memorized and added to the total credit that is associated to the survey code.

How to update Survey code :

- update configuration in the "audit" window of «Configurator 3.06c»
- special ServiceKey (through «Giotto/PC-Programmer 3.02d»)
- automatic updating after every audit readout (see the relative option)

Credit surveyed is stored in the audit memory under the label EA2 and data are divided as follows:
EA2*093 Credit on keys *Number of keys introduced*code*credit surveyed

View Audit Data	
Audit File	
File Name:	C:\REDCONFIGURATOR\Audit_sicur_JedyA99_1. Load
Nr. of files: 1	
Data	
ID:	1
Type:	FAG CG5000S
Date:	16/06/03 09:26
Key Credit Survey	
Survey Code:	1
Num of keys:	29472
Credit value:	36287598
Close	

Data string is in the audit file generated by DDCMP; when file is opened through "DDCMP Data Transfer v. 2.03", data are displayed in the "Key Credit Survey" window :
Survey Code = code identifying credit survey.
Num of keys = number of keys that have been introduced.

Credit value = amount of credit (on keys) that has been memorized in the system containing the audit file.

Add each credit with the same code and you'll get the total amount of credit on keys circulating in the same location.

Auto-increment code ?	N
-----------------------	---

N **Recommended** : this value is default (it must be changed manually).
Y The system automatically moves to the next code after audit readout; this only happens if a vend has been made after the previous data readout. Be careful with such option (we suggest leaving it on "N").

Times (Fn07)

Only for JEDY 5600 - Executive

On JEDY-5600 the following time ranges can be enabled daily:

- 4 times ON/OFF
- 2 times when discounts are given
- 1 time when Free Vends are given
- 1 time when Free Credit is given

When an option is set on "0", the time range is inhibited.

Power ON	1
hrs/min	0

First power ON

Power OFF	1
hrs/min	0

First power OFF

... go on till the fourth ON/OFF is set

Start Discount	1
hrs/min	0

1st time for discounts ON. During this time range discounts are given to all vends, both key and cash.

End Discount	1
hrs/min	0

1st time for discounts OFF.

Start Free Vend	1
hrs/min	0

1st time for Free Vends ON.

In order to simulate a credit, set a fictitious credit value in Function 18. All vends are free during this time range (fictitious credit is displayed).

+ Fn 18: Fictit. credit
value: 5,00

End Free Vend	1
hrs/min	0

1st time for Free Vends OFF.

Start Free Cred	0
hrs/min	0

Free Credit ON. Free credit must be set in Function 06. Free Credit is only loaded on keys within this time range; all the options about Free Vends are valid.

+ Fn 06: Free credit
value: 0,50

End Free Cred	0
hrs/min	0

Free Credit OFF.

Free Credit (Fn22)

Only for JEDY 5600 - Executive

Predefined Free Credit is automatically added on the key on the first vend of the day/period.

Free credit options can be different according to the key you are using:

- free credit can either be added to the present credit or replace it;
- free credit can be given either on the first vend of the day or when the key is first introduced in the reader;
- up to 4 different free credits, each associated to a different user code.

Warning

We recommend Free Credit with FageKeys 98 only since they contain a full date (dd/mm/yy) which enables a complete check on Free Credit options.

FageKeys type 1, instead, only contain day/month (partial check on Free Credit options).

FageKey 98 (recommended): you can decide how often Free credit must be given (no. of days). Free credit is loaded on a different memory than cash credit. You can therefore clear residual Free Credit without touching cash credit.

With Price Holding Mode, selections can be inhibited in *Function 20* – see paragraph – when Free Credit is given.

How to set "Free Credit" options

Free Credit
enabled ?

Y

N No Free Credit is given.

Y **Free Credit enabled.** You can enter all the options about Free Credit now.

Free Credit
value: 0,00

enter Free Credit value

Max. value = € 655.35

Restricted
Free Credit ? N

N Free Credit to all *FageKeys*

Y Free Credit is only given to **enabled** *FageKeys* (*FageKeys* are either enabled through *Giotto Programmer* or *Programmer P4000*)

Monthly Free
Credit? N

N Daily Free Credit : free credit is given once a day, on the first vend with the key.

Y Monthly Free Credit: free credit is given once a month, on the first vend of the running month.

Warning: for Keys type 1, the same operative mode must be set for all systems.

Y

Fractionated
Free Credit? N

option for monthly Free Credit.

N Option inhibited.

Y Free Credit is given with proportional value to the days left to the end of the month; credit is always divided in X/31, where X is the number of the days to the end of the month.

This particular application of Free Credit has been created to load only a portion of credit on the keys that are given to the customers in the running month. Such a portion is proportional to the number of days to the end of the month.

Set Free Credit
period ? 1

Only for KEY 98 (see Fn06)

Enter how often you want to give Free Credit (once every 1 to 255 days). Enter "1" for daily Free Credit.

Substitute Free
Credit ? N

N Free Credit is added to the credit on the key.

Y Free Credit replaces credit on the key.

Be careful when you enable this option with keys "type 1" because the whole credit is cleared (cash credit, too).

Free Credit with Keys 98:

- Free Credit is either added to current Free Credit or overwritten (cash credit is left unchanged, though).
- Free Credit is used before cash credit.
- If a key98 is introduced in a system where Free Credit is not programmed, cash credit is only displayed.

Immediately
Free Credit? N

N Free Credit is loaded on the key on the first vend of the day/month.

Y Free Credit is loaded on the key the first time of the day/month the key is introduced in the reader (not committed to vend).

4 Levels
Free Credit ? N

N Standard. The same Free Credit is given to all keys.

Y 4-level Free Credit. You can set up to 4 *User Key Codes* and give different Free Credits. For this option, you need to know the key user codes; customers will be given different free credits according to their user codes.

Y

Level 1: from
User No. 0

Enter the starting user code of the first level (1 to 32767) and press **F** to confirm.

Level 1: up
User No. 0

Enter the final user code of the first level (1 to 32767) and press **F** to confirm.

Free Credit
Level 1: 0,00

Enter the amount of Free Credit belonging to the first level (max 65535).

Max. value: €655.35

... go on till all 4 levels are set.

Free Vends with FageKey type 1 (Fn22)

Only for JEDY 5600 - Executive

Up to 15 Free Vends can be set in Function 22.

Free Vends are given for any vend during the day; when a key has reached the max. number of Free Vends, vends are charged at their usual price.

How to set Free Vends

(skip the options about restricted discounts)

Free Credit
enabled ? N

Do not set "Y" here. If you do, free vends are inhibited.

Free Vends
enabled ? Y

N If you don't set "Y", the option "Restricted discounts & Free Vends" is displayed.

Y Free Vends are enabled.

4 Levels
Free Vends? N

N Standard. The same amount of Free Vends is is given to all keys.

Free Vends
number: 0

Enter the number of daily Free Vends (**max 15**).
Each key is given Free Vends, no matter the product.

4 levels
Free Vends? Y

Y 4-level Free Vends. Up to 4 *User Key Codes* can be set (with a different amount of daily Free Vends for each).
For this option, you need to know the user key codes.

Level 1: from
User No. 0

Enter the starting user code of the first level (1 to 32767), then press **F** to confirm.

Level 1: up
User No. 0

Enter the final user code of the first level (1 to 32767), then press **F** to confirm.

Lev.1 FreeVends
number 0

Enter the amount of Free Vends belonging to the first level.

RestrictedDiscounts
& FreeVends? N

N All keys are given Free Vends.

Y Enabled keys are ONLY given Free Vends. *FageKeys* are enabled through the *Giotto Programmer* or *Programmer P4000*.

Free Vends with FageKey 98 (Fn36)

Only for JEDY 5600 - Executive

Up to 15 Free Vends can be set in Function 22.

Free Vends are given for any vend during the day; when a key has reached the max. number of Free Vends, vends are charged at their usual price.

WARNING

This option is highly recommended with FageKey 98 (the date is not written in full on FageKey type 1 and this might result in an incomplete check).

The instructions here below are referred to Fn36 (FageKey98). For Keys type 1, read the page before (Fn22).

How to set Fn 36

(the options about special discounts are also described since Free Vends and Special discounts can be enabled at the same time).

Monthly Free Vends
& Discounts ? N

N

Set Free Vends &
Discoun.days: 1

The amount of Free Vends is loaded (on the key) on the first vend of the period/month programmed:

N Either daily or periodical Free Vends.

Y FreeVends are only given once a month.

How often special discounts are given (every **1** to **255** days).
Enter **1** for daily discounts.

Free Vends
enabled ? Y

Y Free Vends are enabled.

Restricted
Free Vends ? N

N All keys are given Free Vends.

Y Enabled keys are ONLY given Free Vends. (FageKeys are enabled to discount either through *Giotto Programmer* or *P4000*)

4 levels
Free Vends ? N

N (standard) : the same amount of Free Vends to all keys.

Free Vends
number ? N

Enter the amount of daily Free Vends (max 15).
Each key is given Free Vends, no matter the product.

4 levels
Free Vends? Y

Y 4-level Free Vends. Up to 4 *User Key Codes* can be set (with a different amount of daily Free Vends for each).
For this option, you need to know the user key codes.

Level 1: from
User No. 0

Enter the starting user code of the first level (1 to 32767), then press **F** to confirm.

Level 1: up
User No. 0

Enter the final user code of the first level (1 to 32767), then press **F** to confirm.

Lev.1 FreeVends
number 0

Enter the amount of Free Vends belonging to the first level.

Discount 1
enabled ? Y

The next options in Fn36 are about daily special discounts. Set "N" to inhibit the options. Go to the next paragraph to enable them.
N Discount 1 is inhibited.

Fictitious Credit (Fn18)

The option "fictitious credit" enables Free Vends with zero credit, too (no credit left on keys).
Enable this option if you want to give Free Vends to those customers with no credit left on their keys.

☞ **Set fictitious credit = highest price.**

How to set fictitious credit (Function 18)

Fictitious Credit
enabled ? N

N Fictitious credit is inhibited.
Y Fictitious credit is enabled: enter a value which is equal to or higher than the max. price. The value must be compatible with USF.

Fictit. credit
value: 0

Enter a value.
Max. value: €655.35

Fictitious credit is no real credit and it is not printed in the Audit list.

Vend options with FageKey98 (Fn20)

Only for JEDY 5600 – Executive

This function is designed for Executive Price Holding Mode (the system checks selections).

The aim of this option is to inhibit Free Vends and Free Credit for specific selections (Keys98 only). When a selection is inhibited, customers can buy a product at full or discounted price but they won't be given any of the bonuses (Free Vends, Free Credit or Special Discounts) that are set in Fn22. This function gives you the opportunity to limit special offers to a few products.

Selection number (1-100)	1
-----------------------------	---

Enter the number of the selection you want to inhibit (this selection will be only available at full price).

1^ Selection NO Free Cred/Vend?	N
------------------------------------	---

N Both Free Vend and Free Credit are enabled for this selection.
Y No Free Vend and Free Credit for this selection.

Special discounts with FageKey type 1 (Fn22)

Only for JEDY 5600 - Executive

WARNING

This option is highly recommended with FageKey 98 (the date is not written in full on FageKey type 1 and this might result in an incomplete check).

For special discounts with FageKey98, go to the next page (Fn36).

How to set Fn22

Free Credit enabled ?	N
--------------------------	---

N
Do not enable this option; if you do, Special Discounts are inhibited.

Free Vends enabled ?	N
-------------------------	---

N
(enter "Y" to give Free Vends, too – max. 3 for each option)

Special Discounts enabled ?	Y
--------------------------------	---

Y Special discounts are enabled.

SpecialDiscounts number:	0
-----------------------------	---

Enter the amount of daily discounts (max 15).
Select Price Holding Mode to associate a discount to a specific selection.

Special discounts with *FageKey* type 98 (Fn36)

Only for JEDY 5600 - Executive

Up to 4 discounts for each price are possible with *FageKey* 98. The option "special discounts" permits you to set the number of daily/periodical discounts for each customer (max. 15).

Both special discounts and Free Vends can be programmed (max.15 each); in that case, discounts are only given when no more Free Vends are available. When no more discounts/free vends are left, vends are made at full price. Discounts are not cumulative; if some discounts are still available at the end of the day, they cannot be used for the following day.

How to set Fn36

Monthly Free Vends
& Discounts ? N

N

Set Free Vends &
Discoun.days: 1

The amount of Special Discounts is loaded (on the key) on the first vend of the period/month programmed:

N Either daily or periodical discounts.

Y Discounts are only given once a month.

How often special discounts are given (every **1** to **255** days).
Enter **1** for daily discounts.

Free Vends
enabled ? N

N

(select "Y" to give Free Vends, too)

Discount 1
enable ? Y

Up to 4 discounts can be enabled (their value is set in Fn04). If no discount is selected, discount 1 is automatically enabled.

N Discount is inhibited.

Y Discount is enabled.

Any discount can be enabled on *FageKey-98* (through *Giotto Programmer*). When no discounts have been enabled on a key, discounts are given anyway if the option "restricted discount" is inhibited.

Restricted
Discount 1 ? N

N Discount is given to all keys.

Y Discount is ONLY given to enabled keys (*keys are enabled either through Giotto Programmer or P4000*).

Discount 1
number 0

enter the amount of discounts (1 to 15).

.... Go on till all four discounts have been set.

Restricted
discount ? N

When no discounts have been selected, discount 1 is always given.
This option enables a check on discounts.

BLACK LIST

Only for JEDY 5600 – Executive

Both ServiceKeys and lost keys can be inhibited here. Enter the User Code in the **Black List** and the key will be no longer accepted.

The message "**Car 7**" displayed on JEDY means you have inserted a key that was inhibited.

All keys circulating in a location must be programmed with different User Codes (and all systems must contain a black list). The Black List may contain up to 150 codes.

The User Code must be a number between 1 and 32767.

Insert code Black List (Fn30)

Disable User
Code: 0

Enter the number of the key that must be inhibited and press **F** to confirm. Enter all the codes you want to inhibit.

If a code has already been included in the Black List, the message "**Existing code**" is displayed. When the Black List is filled up, the message "**Black List full**" is displayed: no more code can be written.

Reset the Black List memory in *Function 33* when codes are inserted for the first time (the starting memory is therefore empty).

Delete Code Black List (Fn31)

User Code: 0

Enter the number of the key you want to re-enable, then press **F** to confirm.

If a number is not present in the Black List, the message "**Code does not exist**" is displayed.

If the Black List is empty, the message "**Black List empty**" is displayed.

View Code Black List (Fn32)

Black List max.
elements 150

Only-read value: max. number of codes in Black List.

This value may differ according to the HW and SW revision of the product.

User Code 0

In order to **read the whole Black List** (from the beginning), press **F** and scroll down the list with **A**. Press **B** to scroll the list back.

When you are looking for a specific key, enter the key number and press **F**; if the number is in the list, the system will start reading from that code.

If the Black List is empty, the message "**Black List empty**" is displayed.

Clear the Black List (Fn33)

Confirm
clearance?

Set "**Y**" and press **F** to reset the Black List.

AUDIT

Only for 5600-Executive

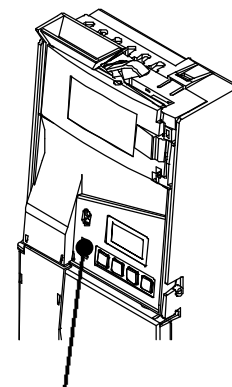
Sales and credit data (Audit) are automatically memorized in *EVA-DTS Protocol*.

Data readout: ➤ through the P3000 (plug the P3000 on "**IR4000 Optical Interface**" on the front panel).
 ➤ through Palmtop "**Workabout mx**" PSION – pre-loaded Vesiel software – (plug the Palmtop on IrDA external interface).

In order to enable IrDA serial interface, read Fn00.

"Jedy Reader Lite".

When FAGE Key Reader is present, data readout is possible through **AuditServiceKey**. Key Reader Lite/IRDA is equipped with IrDA serial interface: you can read data through PalmTop "Workabout mx" PSION.



Optical Interface IR4000
external IrDA (serial) 2400 bps

After connection to *Optical Interface IR4000* you can read data either through *P3000*, or through *Data Box DB4000* (optical readout)

- through P3000:

Position *P3000* optical sensors just opposite the *IR4000 Interface*, then press **A**. Keep the P3000 in that position and wait till the message "Audit readout complete" is displayed on the P3000.

- through DB4000:

Position *Data Box DB4000* optical sensors just opposite *IR4000 Interface*, then press startup key. While reading data, the green LED is ON; when readout has been completed successfully, an acoustic signal is emitted.

Partial counters (UP) are reset after each readout but total counters (IN) can be only reset in *Function 12* through the P3000.

Reset Audit (Fn12)

This function enables Audit reset (enter password).

Insert Password
Audit clear -----

Enter the password if you want to prevent unauthorized Audit reset. Default password = 00000.

In order to modify the password, enter 00000, then press **F** and enter the new password. Press **F** once more to confirm.

Clear. Service
Key enabled ? N

N Standard: option inhibited.

Y Audit reset through ServiceKey (Location code = 65510)

Confirm
clearance ? N

N Reset aborted.

Y Reset confirmed: Audit data since initialization are deleted.

Maintenance

Coin Validator Clean-up

In order to keep the product efficient, coin chutes must be frequently cleaned.

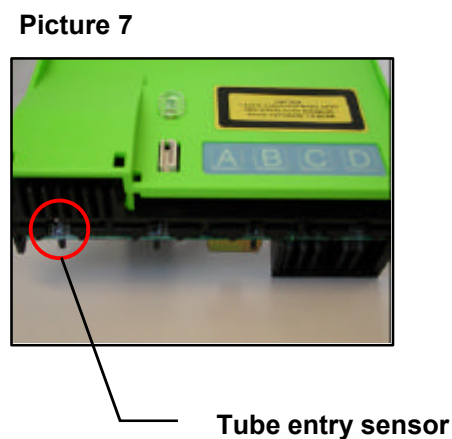
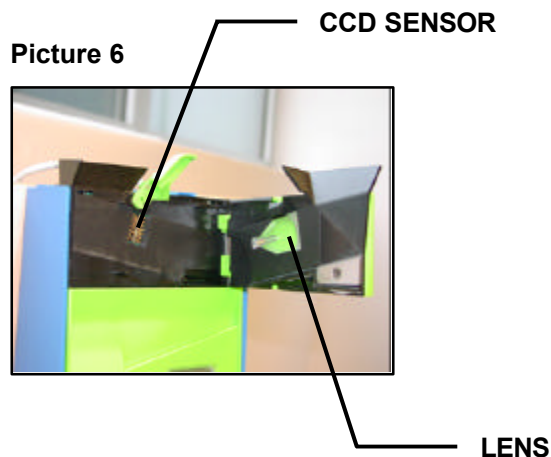
Be sure the Change giver is OFF before cleaning the validator.

Picture 6 shows the elements to be cleaned : lens and CCD sensor.

Use a soft cloth either with water or a mild detergent. Do NOT use solvents (degreasing fluids for PCB, oils, benzene or trichloroethylene) that might damage plastic parts. Clean CCD sensor with a soft brush or a clean cotton cloth; be careful not to scratch the lens. Prevent dust or grease from accumulating because they slow down the coin run.

Sensors clean-up – tube entry

The 4 optical sensors on the lower end of the validator (picture 7) must be periodically cleaned either with a damp soft cloth or compressed air.



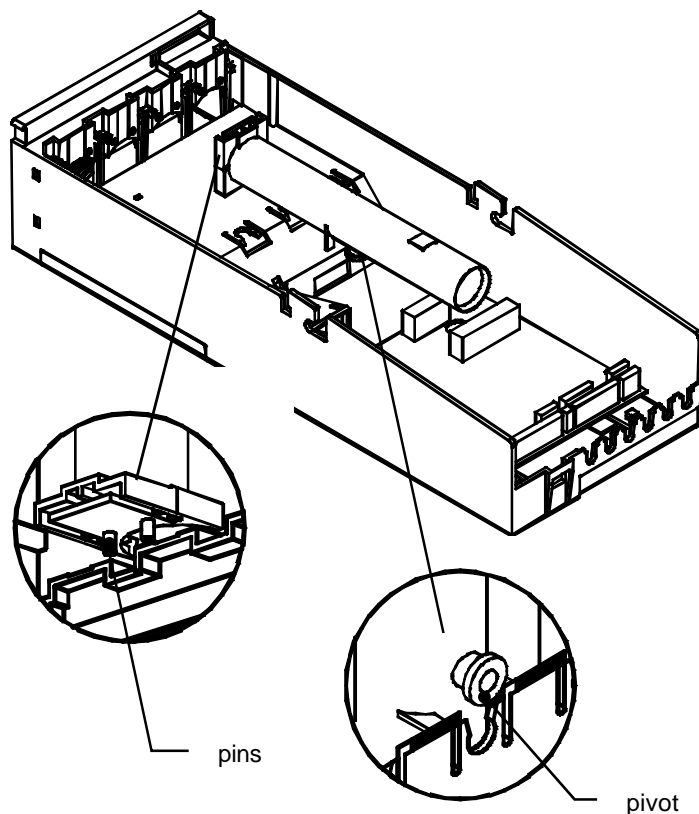
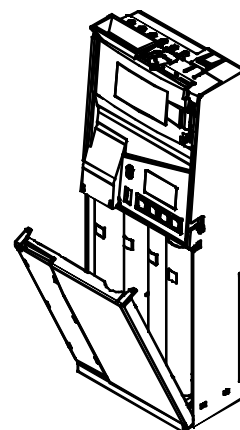
How to replace tubes

Remove tube cover (see picture on the right)

Remove coin validator (see Picture 1, page 6) and unplug flat cable from CPU

Lay down JEDY (see picture below)

Pull the tube up and following the arrow.



Tube position (a-b-c-d) and nominal diameter are written on the tube itself. Table 1 contains all possible configurations according to coin diameter and thickness.

When removing the tube, be careful not to drop the extractor at the base of the tube.

In order to pull out the tube, pull it following the arrow to release the pivot from the staple (A), while the validator is lying on its back. Insert the pivot in the staple (A) to fix the tube, after inserting the pins (B) in the holes at the base of the validator (always keep the validator lying on its back).

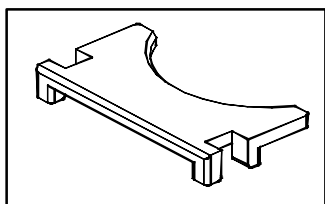
How to insert coin tubes

Insert the right extractor at the base of the tube (see table 6)

Lay down the change giver.

Insert pivot A in the staple, then make the two pins B enter into the holes at the bottom of the tube/chassis. Push the tube and let it snap in its seat.

Tubes and coin Extractors



extractor

Different extractors can be inserted at the bottom of the tube depending on the thickness of coins and the position of the tube. *Table 7* contains all the available *EXTRACTORS*, classified with different colours in order to be immediately recognized.

Insert the extractor at the bottom of the tube (see picture)

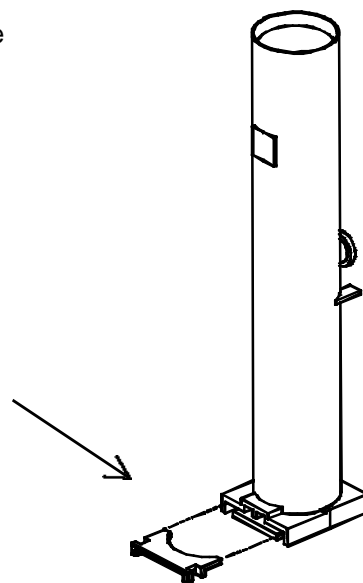


table 6 – Tube codes

COIN		TUBE	Tube code	Colour	POSITION			
Diameter (mm) min - max	thickness (mm) min - max				A	B	C	D
16.76 – 18.75	1.20 – 1.80	BC19	MP.01613	yellow		•	•	
	1.40 – 2.20	BC19G	MP.01614	orange		•	•	
18.76 – 20.75	1.45 – 2.30	ABC21	MP.01615	green	•	•	•	
20.76 – 22.75	1.45 – 2.30	ABC23	MP.01616	green	•	•	•	
22.76 – 24.75	1.50 – 2.40	ABC25	MP.01624	red	•	•	•	
	1.50 – 2.40	D25	MP.01618	blue				•
	1.80 – 3.00	D25G	MP.01619	white				•
22.76 – 26.75	1.50 – 2.40	ABC27	MP.01617	red	•	•	•	
	1.80 – 3.00	D27	MP.01620	white				•
26.76 – 28.75	1.80 – 3.00	D29	MP.01621	black				•
28.76 – 30.75	1.80 – 3.00	D31	MP.01622	black				•

Each *EXTRACTOR* is marked by a colour and each colour is associated to a specific tube.

Table 7 contains all the extractor codes with their colours :

table 7 – extractor codes

EXTRACTORS		TUBES				
		A	B	C	D	
MP.01606	yellow	-	19		-	
MP.01607	orange		19G			
MP.01608	green	21 - 23				
MP.01609	red	25 - 27				
MP.01610	bleu	-			25	
MP.01611	white				25G-27	
MP.01612	black					29-31

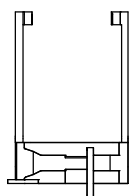
Pullers

PULLERS are the devices expelling coins from the tubes.

The same set of pullers is always used for the same set of tubes.

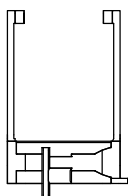
Pullers always occupy the same position (position can't be changed).

Here are the positions for each puller:



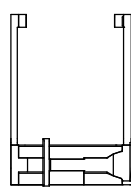
A - C

code ▶ *MP.01601*



B

MP.01602



D

MP.01603

EURO : tube configurations

Table 8 shows which tubes can be used for Euro coins.

table 8

€	A – B – C				D			max
	21	23	25	27	25	25G	27	
5c		•						80
10c	•							70
20c		•						65
50c						•		50
€1			•		•	•		60
€2				•			•	60
extractor								

Table 9 contains a few configurations for EURO tubes; the full code of a system is composed by the following elements:

Jedy 5400/MDB > JE 303 EU XXX 0

Jedy 5600/EXE > JE 701 EU XXX 0

table 9

code XXX	Change				Tube configuration			
	A	B	C	D	A	B	C	D
316	10c	10c	5c/20c	50c/€1	21	21	23	25G
318	10c	5c/20c	5c/20c	50c/€1	21	23	23	25G
324	10c	5c/20c	€1	50c/€1	21	23	25	25G
327	5c/20c	€2	€2	50c/€1	23	27	27	25G

(more configurations are also possible)

Diagnostics

LEDs signals on 5400/MDB

Two LEDs are present on the front panel to display the system operating status:

YELLOW LED	GREEN LED	message
On	On	(When giving power): checking connection to P3000
On	-	Coins are inhibited
Off	-	Coins are enabled
Flashing quickly	-	Door open; separator / validator / ejector failure
Off	Off	Power failure Fatal error
-	On	System ON and MDB serial link enabled
-	Flashing slowly	No MDB serial link Connection to P3000 enabled
-	Flashing quickly	FILL (Tubes) Protocol

Yellow/green LEDs display the system operating status.

How to reset errors

Errors resulting from system failures can be reset following one of the three procedures here below (the procedure depends on the Jedy in use) - see *table 10*:

table 10

Reset procedure	mod. 5400	mod. 5600
<u>Through P3000</u> Enter Fn23 and set "Y" for the option "Clear failures".	•	•
<u>Quick reset through keyboard</u> Switch the system OFF, press key A and keep it pressed while you switch the system ON again; wait till the yellow Led is OFF (Jedy5400) or "0" (zero) is displayed (Jedy5600).	•	•
<u>SetUp menu through keyboard</u> Enter the setup menu and scroll down the menu till you reach the option [ClrEr], then press D to confirm.	-	•

Errors displayed (Fn23)

Function 23 contains a list of messages (see table 11) describing system failures; "Y" means an error is present. Go back to page 46 (How to reset errors).

table 11

Function 23	LCD mod. 5600 EXE	description
Test Separator: (Y/N) N		The separator door can be opened manually for 1 second. Press Y for testing and F to confirm.
Ignore failures Separation? N		"N" : separator errors are detected; "Y" : errors are detected but the device causing the error is not inhibited.
Validator failure: Y	U	A number of coins were accepted but their value was not loaded : sensor failure in cashbox may have occurred. If the error is repeated, all coins are permanently inhibited (solve the problem as soon as possible)
Separator failure: Y	S	Six coins in a row went to the cashbox and not into the tubes. Letter "S" is displayed on the first digit.
Full Sensors failure: Y	F	Failure in tube gate sensors. Coins go to the cashbox. Letter "F" is displayed on the first digit.
Tube 1 failure: Y	F---	Failure in tube gate sensor 1: coins might have fallen in the wrong tube. When such an error is detected, coins are routed to the cashbox (or to a different tube). Letter "F" is displayed on the blocked position. <i>ABCD correspond to 2-3-4-5 on the display.</i>
Ejector 1 failure: Y	E---	Coin was not ejected correctly - its puller is blocked. Letter "E" is displayed on the blocked position.
Clear failures? (Y/N) N		Set Y to reset all errors, press F to confirm.

Diagnostics on optical sensors

Fn23 also contains diagnostics messages on optical sensors. When a value differs too much from average values, sensor circuits might be damaged. Displayed measures are updated in real time.

Status Sensor F5: 4,30	Cashbox sensor.
Status Sensor 1 Separator: 4,84	Sensors 1-2 in separator.
Status Sensor Full Tube1: 3,85	Top sensors in the 4 tubes.
Status Sensor Ejector 1: 0,04	Sensor of the 4 coin ejectors.

Messages on LCD – mod.5600/EXE

Diagnostics messages can be displayed on an external LCD (Jedy 5600) – those messages refer to temporary errors in pullers.

G---	Failures both in coin acceptance (separator/tubes) and in pullers.
H---	Message displayed when giving power: pullers are not in the correct position.
a---	Message displayed when giving power: puller's run was interrupted at start.
b---	Message displayed when giving power: puller's run back was interrupted.

errors H, a, b are only displayed when giving power, then they are automatically reset (Jedy always tries to reset pullers' position); if the error is repeated, letter **E** is displayed on the blocked position.

Diagnostics on coin validator

Should failures occur in the *coin validator* circuit, the message [**Ser - -**] is displayed, followed by the error number. If more errors occur, their number codes are summed up :

no.	error
1	Cashbox Sensor
2	Offset thickness
4	Offset alloy phase
8	Offset alloy amplitude
16	Laser

Switch Jedy OFF and ON again to reset errors; if the error is repeated, call VESIEL Customer Service.

Diagnostics on FageKey

(JEDY 5600 – Executive)

In the case of malfunctioning of Jedy Key/Card Reader, the message [**CAR - -**] is displayed, followed by the error code.

code	error
CAR 1	FageKey rejected. Possible reasons: <ul style="list-style-type: none"> • Credit on key + cash credit > 65535 • Last digit of the credit \square 0 or 5 and check enabled • Credit on key > 1.5 times maximum credit and check enabled
CAR 2	Invalid Operator code
CAR 3	Invalid Location code
CAR 4	Invalid ServiceKey for Euro conversion
CAR 5	Invalid PIN
CAR 6	FageKey rejected. Possible reasons: <ul style="list-style-type: none"> • VMC inhibited • No serial link with VMC • Key inserted to load cash credit but card loading option inhibited • ServiceKey65528 (test vends) inserted with cash credit • ServiceKey65510 (audit reset) inserted but option is inhibited
CAR 7	FageKey rejected; user code in black list
CAR 9	Error in reading or updating key
CAR 10	Invalid FageKey (Type1/Type98 are different from the type previously set)
CAR 11	FageKey invalidated for anti-copying. Invalid credit.
CAR 14	FageKey contains credit in Euro but system is still working in NCU

General Diagnostics - messages displayed on LCD :

Message	Mode	Description
P3000	Steady ON	Waiting connection to the P3000
Err--	Steady ON	System blocked (<i>check parameters</i>)
Car--	Steady ON	FageKey error (<i>table 3</i>)
InH	Steady ON	VMC inhibited (<i>inhibit line activated</i>)
Audit	Steady ON	Sending Audit ...
Conf	Steady ON	Sending/Receiving Configuration ...
CLEAR	Steady ON	Resetting Audit ...
FREE	Steady ON	Test Key inserted.
OFF	Steady ON	Temporary OFF during enabled time interval
Euro	Steady ON	Switch ON signal if Jedy operates in Euro
MM-NN	Steady ON	Signal displayed while programming coins: <i>MM</i> is the no. of coins already dropped, <i>NN</i> is the overall No. of coins to be dropped.
FILL	Steady ON	Filling tubes ... (from setup menu)
NoSEL	Flashing	Coin validator was not found / communication aborted
CAL	Steady ON	Calibrating coin validator (wait, please)
dEMO	Flashing	Demo Mode (no serial connection)
SE- - -	Steady ON	Software release
CFGCh	Steady ON	Coin parameters have been edited.
SEtUP	Steady ON	Setup Mode
Ser--	Flashing	Validator error (call FAGE customer service)

CONFIGURATOR

The software "CONFIGURATOR" enables users to set all the functions in JEDY through a PC (Windows).

Minimum PC Requirements:

- Pentium processor
- Windows 95/98/Me
- RS232 Serial port (COM)
- FaGe cable CB.01491

"CONFIGURATOR" enables the following operations:

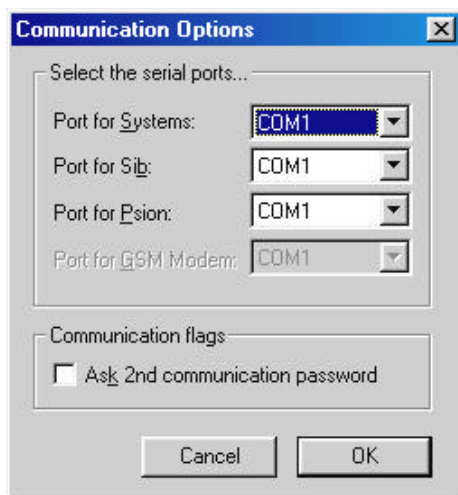
- You can configure any FAGE product and save the file.
- You can download a file (.cfg) containing an entire configuration.
- You can read/edit/send a configuration.
- You can read Audit data from JEDY.
- You can download a software release on the SIB Interface (in order to upgrade Jedy)

Setup

The software "**Configurator**" can be downloaded free from our website www.fage.it after you have registered in the "download" area.

Copy the file on unit "C" and click on setup; file is unzipped and a folder called "CONFIGURATOR" is automatically created. Click on "config.exe" to start the program.

Serial port (configuration)



Click on " **Comms** ", then on " **Setup** ": the window on the left is opened.

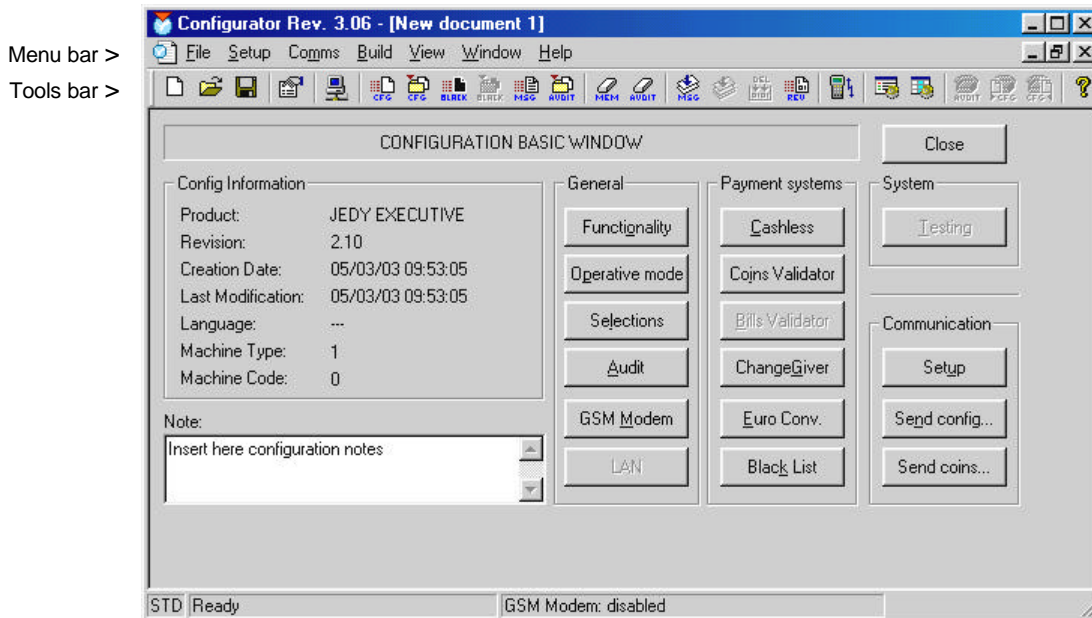
Select the serial port cable CB.01491 is plugged on, then press "**Confirm**" to store the setting.

How to open the program (Quick guide)

Plug JEDY on a serial port of your PC (cable CB.01491) and give power.

Click on "config.exe" to start the program (create a link on the desktop): the main menu is displayed.

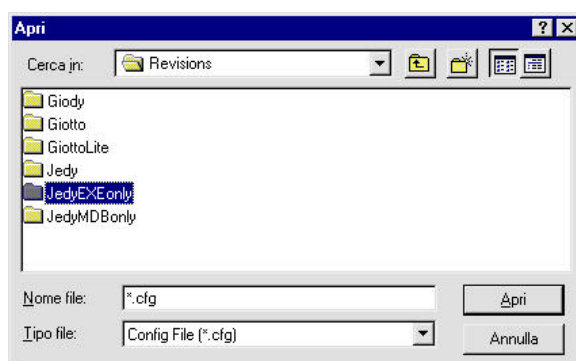
In order to create a new configuration, click on **File** in the menu bar, then on **New** in the pull-down menu (you can simply click on "new" – white sheet – on the tools bar). Next, select a JEDY model and click on **OK**: the window here below is opened.



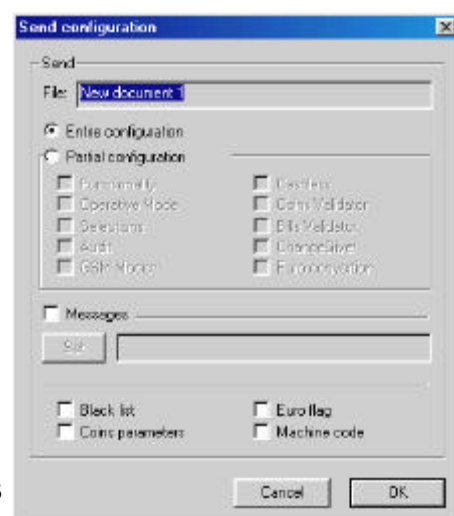
Each button opens a group of functions: click on a button and enter the data required, then click on **Close** and save the newly created configuration in a new folder (you can save the file by clicking on **Save as** in the **File** menu).

Sending a configuration.

In order to transfer a configuration from your hard disc, click on "Comms\System\Send Configuration..." from the menu bar (or else, simply click on CFG – tools bar). When the window in **Picture A** is opened, select a file from the product folder and click on "open": the window in **Picture B** is opened. Click on "confirm" to send your configuration.



Picture A



Picture B

SIB

Software Upgrade

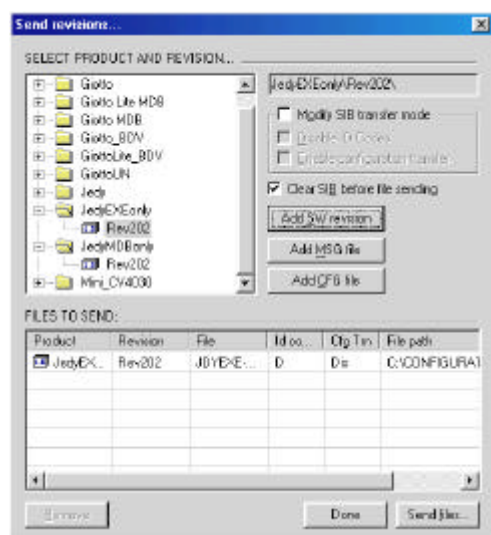
Serial Interface BDM (SIB). Such a device upgrades all those Vesiel products that are equipped with the following FAGE Payment Systems: Jedy / Giody / Giotto / MiniCV4030 / CV4000.

Jedy 5400 / 5600: the following elements can be upgraded through the SIB :

- Software (.s19)
- Configuration (.cfg.)



Software download from a PC to the SIB :



Our website www.fage.it ("download" area) contains the latest software release for each product. Download a file and click on Setup. A new folder will be created following the path: **C:\CONFIGURATOR\Revisions\Jedy....\Rev---**. Load files from this folder on the SIB (through Configurator). Cable for connection to the PC is part of the SIB equipment.

Press the following options on the menu bar:

Comms/SIB/send file..., to open the window here on the left. Select the product folder (Jedy), click on "Add SW revision" and select a language. Tick the flag "Clear SIB before file sending". Check the SIB unit is plugged on the serial port on your PC (check power supply – power supplier 15VDC MC.01559); click on **"Send file..."** to send the selected files to the SIB; wait till the system is fully upgraded (green LED steady ON).

Software upgrade through SIB :



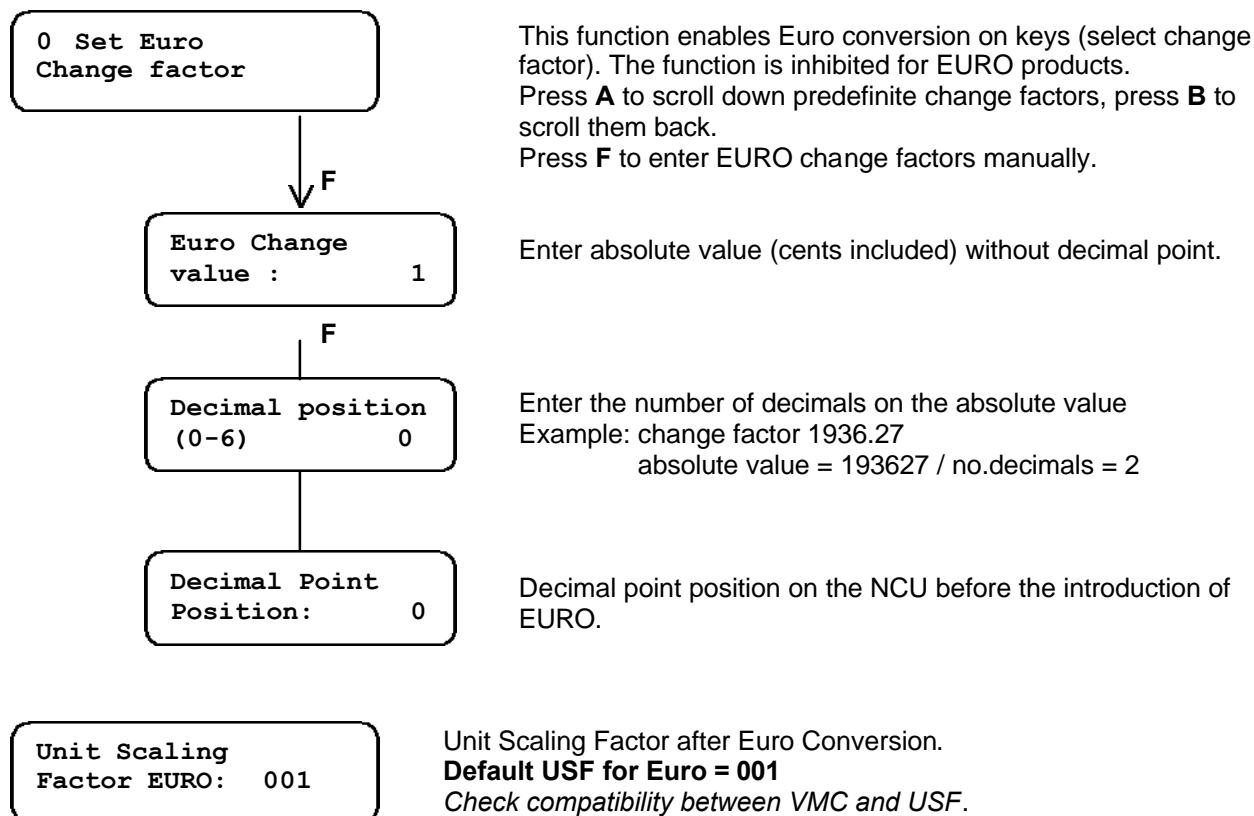
SIB port
cable CB.01178

Switch Jedy OFF and plug the SIB unit on the 6-pin connector, then switch Jedy ON again and wait till software upgrade is completed (green LED steady ON). Then, switch Jedy OFF and unplug the SIB unit.

Euro Parameters – Function 38

WARNING ! Do not edit parameters in this function. All the JEDY products that have been sold in Europe only accept Euro keys ("Currency description" = 978 - Fn00). When a noEuro key is in the reader, the credit on that key is converted according to the predefined change factor in Fn38.

Here below is a part of the whole menu in Fn38 (options about predefined change factors). Other parameters must be left on "N" or on "0" (zero).



Euro FageKey

NCU **FageKey** : credit on this key is expressed in national currency.

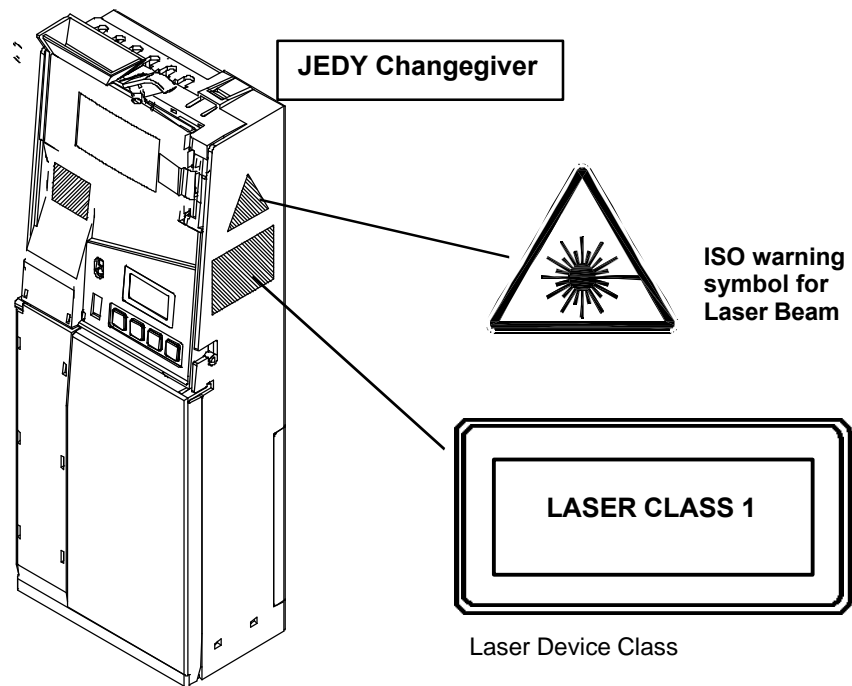
EURO **FageKey** : credit on this key is expressed in EURO.

Details about FageKeys :

- **NCU FageKeys** are always accepted. When a system accepts EURO, credit on keys is automatically converted (change factor in Fn38).
- **Euro FageKeys** are also accepted by those systems that are not configured in the Euro currency; Upgrade your systems with Euro software, or else avoid Euro keys/cards in those locations where NCU systems are still present.
- **Euro FageKeys** can be programmed through the *GIOTTO Programmer*; enable key "Euro 1" or "Euro 98" according to payment systems currently in use.

Warning labels on laser device

In order to meet the standards of **EN 60825-1 ed.4**, warning labels have been stuck on JEDY laser device (see Picture here below - labels are drawn natural size) :

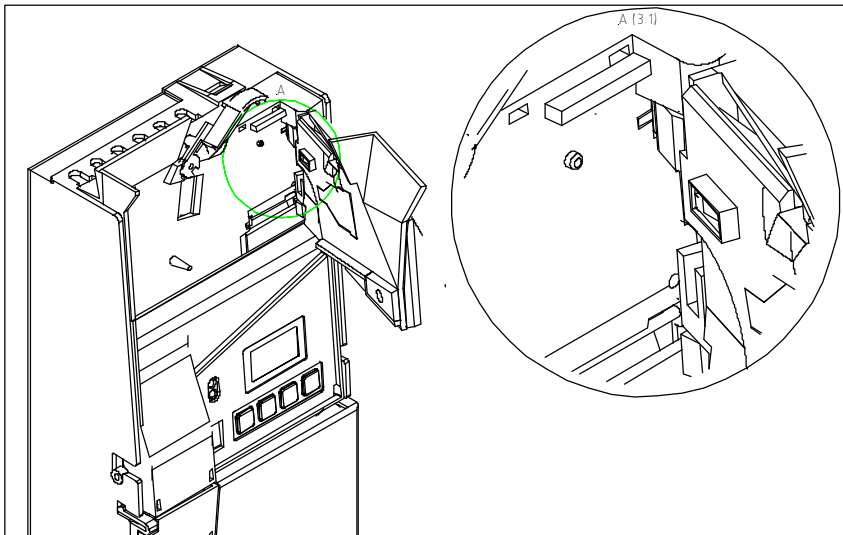


SECURITY MEASURES TO BE ADOPTED IN THE CASE OF EXTRAORDINARY REPAIRS / ASSEMBLY OF THE LASER DEVICE

JEDY Coin Validator is an extremely safe device (Class 1) even when the validator door is open.

When ordinary maintenance is being provided with the validator door closed, all safety conditions are met. When the machine needs servicing with the validator door open (lens/sensor cleanup ...) and power ON, the technician's eyes must be at least 15cms from the validator lens. When the distance is shorter, protective glasses must be worn.

As a matter of fact, when the validator door is opened (picture 2), the laser device produces a radiation whose LEA is within the limits of Class 1 devices (no risks for the technician).



Picture 2

When the Validator needs servicing with the laser device ON, maintenance should be provided in equipped laboratories. The laser radiation the technician is exposed to is not dangerous, nevertheless a few security measures will have to be adopted (read next paragraph).

SECURITY MEASURES TO BE ADOPTED IN SERVICING ROOM

- Unauthorized personnel must keep off the room where machines are being serviced.
- When extraordinary maintenance is being provided, the room should be locked.
- Even if the technician is wearing protective glasses, lighting in the working area should be as bright as possible to reduce pupil dilatation.
- During maintenance operations, the technician's eyes should be to a higher or to a lower level than the laser beam.
- The risk of specular reflections must be reduced or avoided at all.
- When the laser device is ON it must be always kept under control.
- Infrared laser ON/OFF warning indicators should be installed.

SECURITY MEASURES TO BE ADOPTED DURING SERVICING OPERATIONS (LASER ON)

- Avoid keeping your eyes at the same level as the laser beam
- Do NOT stare at the laser beam when it is ON, unless wearing protective glasses (permanent damage to the retina).
- Inform the people in the room about the direction of the laser beam.
- Before the laser is ON, be sure that all the people who are not busy in servicing operations have moved back.
- Take off watches, jewels or any other accessory that may cause uncontrolled reflections of the laser beam.
- Wear protective glasses correctly; if you are not wearing protective glasses correctly, your eyes won't be protected.

TECHNICAL FEATURES

Laser Device : **Class 1**

Features of the laser source/lens

Max. optical power:	1.18 mW
Type wave length :	850 nm
Angular spread :	20 x 4 mm
Divergency :	9.45 mrad.

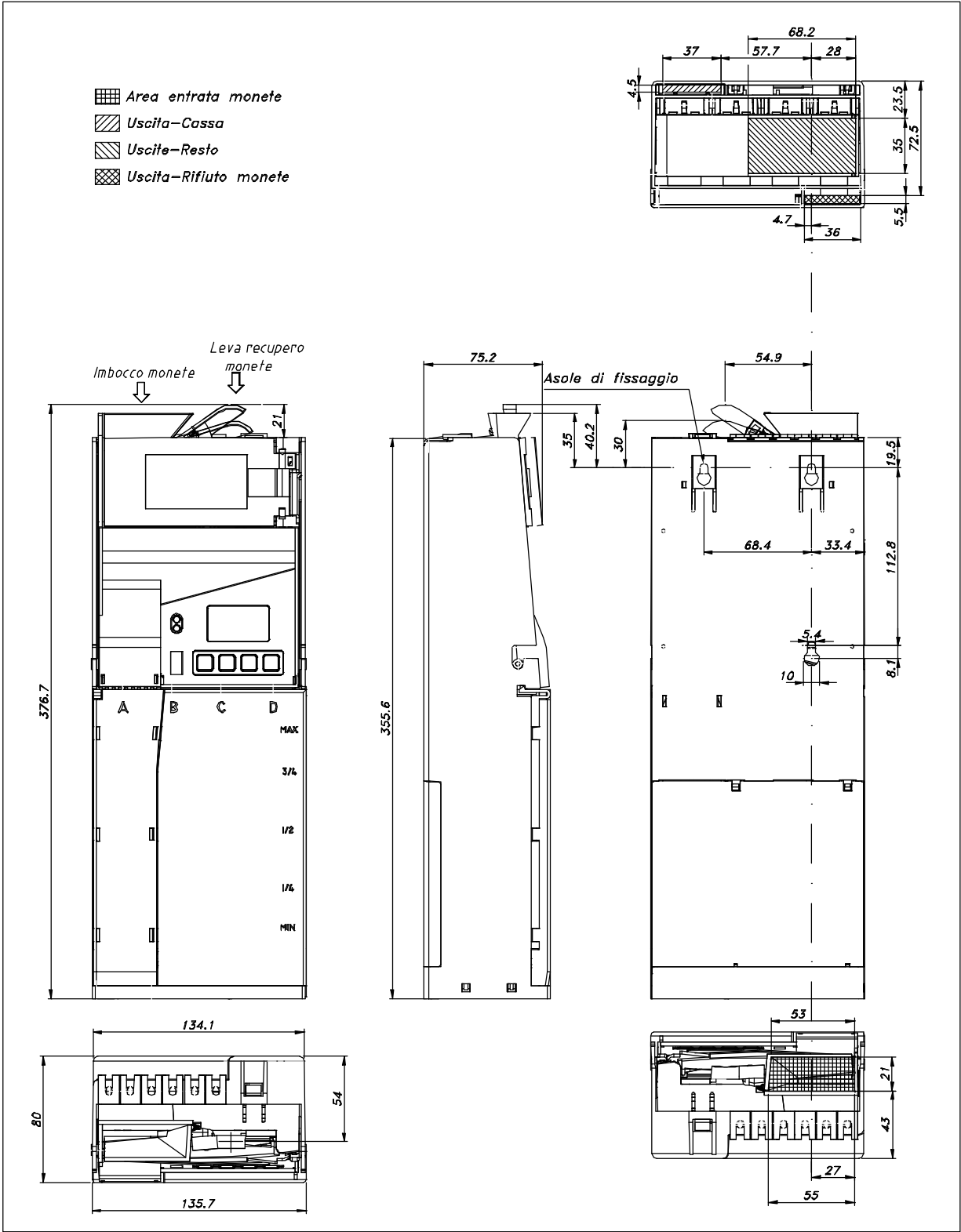
The power of vcsel cannot be increased.

Specifications

	5400	5600
Protocols	MDB	Executive MDB
Power requirements (nominal)	34V DC	24V AC
Power requirements (tolerance)	18.5V / 42V DC	24V ~ ±10%
Consumption	15W max	
Temperature	0° to 50° C	
Laser device	Class 1 Diameter resolution: ± 50 ìm	
Optical IrDA interface (internal / external)	- / (•)	- / (•)
FageKey Reader	-	(•)
30 coin channels (re-programmable)	•	•
Set NCU through P3000	•	•
Set tolerance on coin discrimination	•	•
Change Tubes	4	4
Replace single tubes	•	•
Prices	-	100 max
Discounts	-	up to 4 levels
LCD internal /external	- / -	• / -
Audit (EVA-DTS protocol)	-	•
Data logging through P3000/Psion mx	-	•
Compatibility with AuditServiceKey	-	•
Connection to Bill Reader	-	-
Programming through P3000	•	•
Languages	2	2
SetUp through keyboard	-	•
Fill tubes through keyboard (fast option)	•	•
Configuration through PC / Psion (external Irda)	• / •	• / •
Software Upgrade through SIB	•	•
Diagnostics on LCD/Leds/P3000	- / • / •	• / - / •
Electromechanical 4-pr. extended memory CSP2	-	(•)
External Interface for MDB Protocol	-	(•)
Size	136 x 385 x 80 mm	
Weight	1.3 Kg	

- standard, (•) extra

SIZE





Electronic Payment System

VESIEL SPA

ITALY

via XX Settembre 49 - 22069 ROVELLASCA (CO)

TEL (++39) 02 96961401 - FAX (++39) 02 96961414

<http://www.fage.it>

e-mail: info@fage.it

DEALER